

JMAP

REGENTS BY TYPE

The NY Algebra II CCSS Regents Exams Questions
from Spring 2015 to August 2017 Sorted by Type

www.jmap.org

Algebra II Common Core State Standards Multiple Choice Regents Exam Questions

1 Which statement(s) about statistical studies is true?

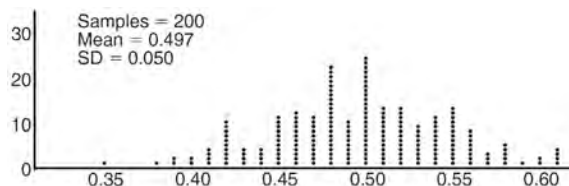
- I. A survey of all English classes in a high school would be a good sample to determine the number of hours students throughout the school spend studying.
- II. A survey of all ninth graders in a high school would be a good sample to determine the number of student parking spaces needed at that high school.
- III. A survey of all students in one lunch period in a high school would be a good sample to determine the number of hours adults spend on social media websites.
- IV. A survey of all Calculus students in a high school would be a good sample to determine the number of students throughout the school who don't like math.

- 1) I, only
- 2) II, only
- 3) I and III
- 4) III and IV

2 A payday loan company makes loans between \$100 and \$1000 available to customers. Every 14 days, customers are charged 30% interest with compounding. In 2013, Remi took out a \$300 payday loan. Which expression can be used to calculate the amount she would owe, in dollars, after one year if she did not make payments?

- 1) $300(.30)^{\frac{14}{365}}$
- 2) $300(1.30)^{\frac{14}{365}}$
- 3) $300(.30)^{\frac{365}{14}}$
- 4) $300(1.30)^{\frac{365}{14}}$

3 Anne has a coin. She does not know if it is a fair coin. She flipped the coin 100 times and obtained 73 heads and 27 tails. She ran a computer simulation of 200 samples of 100 fair coin flips. The output of the proportion of heads is shown below.



Given the results of her coin flips and of her computer simulation, which statement is most accurate?

- 1) 73 of the computer's next 100 coin flips will be heads.
- 2) 50 of her next 100 coin flips will be heads.
- 3) Her coin is not fair.
- 4) Her coin is fair.

4 Factored completely, $m^5 + m^3 - 6m$ is equivalent to

- 1) $(m + 3)(m - 2)$
- 2) $(m^2 + 3m)(m^2 - 2)$
- 3) $m(m^4 + m^2 - 6)$
- 4) $m(m^2 + 3)(m^2 - 2)$

5 The roots of the equation $x^2 + 2x + 5 = 0$ are

- 1) -3 and 1
- 2) -1 , only
- 3) $-1 + 2i$ and $-1 - 2i$
- 4) $-1 + 4i$ and $-1 - 4i$

- 6 Which value is *not* contained in the solution of the system shown below?

$$a + 5b - c = -20$$

$$4a - 5b + 4c = 19$$

$$-a - 5b - 5c = 2$$

- 1) -2
- 2) 2
- 3) 3
- 4) -3

- 7 What is the solution set of the equation

$$\frac{3x+25}{x+7} - 5 = \frac{3}{x}$$

- 1) $\left\{\frac{3}{2}, 7\right\}$
- 2) $\left\{\frac{7}{2}, -3\right\}$
- 3) $\left\{-\frac{3}{2}, 7\right\}$
- 4) $\left\{-\frac{7}{2}, -3\right\}$

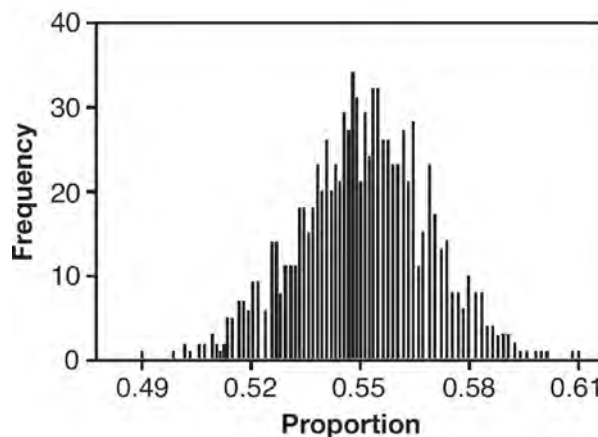
- 8 The Ferris wheel at the landmark Navy Pier in Chicago takes 7 minutes to make one full rotation. The height, H , in feet, above the ground of one of the six-person cars can be modeled by

$$H(t) = 70 \sin\left(\frac{2\pi}{7}(t - 1.75)\right) + 80, \text{ where } t \text{ is time,}$$

in minutes. Using $H(t)$ for one full rotation, this car's minimum height, in feet, is

- 1) 150
- 2) 70
- 3) 10
- 4) 0

- 9 A candidate for political office commissioned a poll. His staff received responses from 900 likely voters and 55% of them said they would vote for the candidate. The staff then conducted a simulation of 1000 more polls of 900 voters, assuming that 55% of voters would vote for their candidate. The output of the simulation is shown in the diagram below.



Given this output, and assuming a 95% confidence level, the margin of error for the poll is closest to

- 1) 0.01
- 2) 0.03
- 3) 0.06
- 4) 0.12

- 10 When $g(x)$ is divided by $x + 4$, the remainder is 0.

Given $g(x) = x^4 + 3x^3 - 6x^2 - 6x + 8$, which conclusion about $g(x)$ is true?

- 1) $g(4) = 0$
- 2) $g(-4) = 0$
- 3) $x - 4$ is a factor of $g(x)$.
- 4) No conclusion can be made regarding $g(x)$.

Algebra II CCSS Multiple Choice Regents Exam Questions

www.jmap.org

- 11 If $\sin^2(32^\circ) + \cos^2(M) = 1$, then M equals
- 1) 32°
 - 2) 58°
 - 3) 68°
 - 4) 72°
- 12 A student studying public policy created a model for the population of Detroit, where the population decreased 25% over a decade. He used the model $P = 714(0.75)^d$, where P is the population, in thousands, d decades after 2010. Another student, Suzanne, wants to use a model that would predict the population after y years. Suzanne's model is best represented by
- 1) $P = 714(0.6500)^y$
 - 2) $P = 714(0.8500)^y$
 - 3) $P = 714(0.9716)^y$
 - 4) $P = 714(0.9750)^y$
- 13 Which binomial is a factor of $x^4 - 4x^2 - 4x + 8$?
- 1) $x - 2$
 - 2) $x + 2$
 - 3) $x - 4$
 - 4) $x + 4$
- 14 In 2013, approximately 1.6 million students took the Critical Reading portion of the SAT exam. The mean score, the modal score, and the standard deviation were calculated to be 496, 430, and 115, respectively. Which interval reflects 95% of the Critical Reading scores?
- 1) 430 ± 115
 - 2) 430 ± 230
 - 3) 496 ± 115
 - 4) 496 ± 230
- 15 Which equation represents an odd function?
- 1) $y = \sin x$
 - 2) $y = \cos x$
 - 3) $y = (x + 1)^3$
 - 4) $y = e^{5x}$
- 16 When $g(x) = \frac{2}{x+2}$ and $h(x) = \log(x+1) + 3$ are graphed on the same set of axes, which coordinates best approximate their point of intersection?
- 1) $(-0.9, 1.8)$
 - 2) $(-0.9, 1.9)$
 - 3) $(1.4, 3.3)$
 - 4) $(1.4, 3.4)$
- 17 Which factorization is *incorrect*?
- 1) $4k^2 - 49 = (2k + 7)(2k - 7)$
 - 2) $a^3 - 8b^3 = (a - 2b)(a^2 + 2ab + 4b^2)$
 - 3) $m^3 + 3m^2 - 4m + 12 = (m - 2)^2(m + 3)$
 - 4) $t^3 + 5t^2 + 6t + t^2 + 5t + 6 = (t + 1)(t + 2)(t + 3)$
- 18 Which expression is equivalent to $(3k - 2i)^2$, where i is the imaginary unit?
- 1) $9k^2 - 4$
 - 2) $9k^2 + 4$
 - 3) $9k^2 - 12ki - 4$
 - 4) $9k^2 - 12ki + 4$

Algebra II CCSS Multiple Choice Regents Exam Questions

www.jmap.org

- 19 Based on climate data that have been collected in Bar Harbor, Maine, the average monthly temperature, in degrees F, can be modeled by the equation $B(x) = 23.914 \sin(0.508x - 2.116) + 55.300$. The same governmental agency collected average monthly temperature data for Phoenix, Arizona, and found the temperatures could be modeled by the equation $P(x) = 20.238 \sin(0.525x - 2.148) + 86.729$. Which statement can *not* be concluded based on the average monthly temperature models x months after starting data collection?
- 1) The average monthly temperature variation is more in Bar Harbor than in Phoenix.
 - 2) The midline average monthly temperature for Bar Harbor is lower than the midline temperature for Phoenix.
 - 3) The maximum average monthly temperature for Bar Harbor is 79° F, to the nearest degree.
 - 4) The minimum average monthly temperature for Phoenix is 20° F, to the nearest degree.
- 20 The population of Jamesburg for the years 2010-2013, respectively, was reported as follows: 250,000 250,937 251,878 252,822
How can this sequence be recursively modeled?
- 1) $j_n = 250,000(1.00375)^{n-1}$
 - 2) $j_n = 250,000 + 937^{(n-1)}$
 - 3) $j_1 = 250,000$
 $j_n = 1.00375j_{n-1}$
 - 4) $j_1 = 250,000$
 $j_n = j_{n-1} + 937$
- 21 Which equation has $1 - i$ as a solution?
- 1) $x^2 + 2x - 2 = 0$
 - 2) $x^2 + 2x + 2 = 0$
 - 3) $x^2 - 2x - 2 = 0$
 - 4) $x^2 - 2x + 2 = 0$
- 22 The completely factored form of $2d^4 + 6d^3 - 18d^2 - 54d$ is
- 1) $2d(d^2 - 9)(d + 3)$
 - 2) $2d(d^2 + 9)(d + 3)$
 - 3) $2d(d + 3)^2(d - 3)$
 - 4) $2d(d - 3)^2(d + 3)$
- 23 The expression $\frac{-3x^2 - 5x + 2}{x^3 + 2x^2}$ can be rewritten as
- 1) $\frac{-3x - 3}{x^2 + 2x}$
 - 2) $\frac{-3x - 1}{x^2}$
 - 3) $-3x^{-1} + 1$
 - 4) $-3x^{-1} + x^{-2}$
- 24 For $x \neq 0$, which expressions are equivalent to one divided by the sixth root of x ?
- I. $\frac{\sqrt[6]{x}}{\sqrt[3]{x}}$ II. $\frac{x^{\frac{1}{6}}}{x^{\frac{1}{3}}}$ III. $x^{\frac{-1}{6}}$
- 1) I and II, only
 - 2) I and III, only
 - 3) II and III, only
 - 4) I, II, and III

25 The expression $\frac{6x^3 + 17x^2 + 10x + 2}{2x + 3}$ equals

- 1) $3x^2 + 4x - 1 + \frac{5}{2x + 3}$
- 2) $6x^2 + 8x - 2 + \frac{5}{2x + 3}$
- 3) $6x^2 - x + 13 - \frac{37}{2x + 3}$
- 4) $3x^2 + 13x + \frac{49}{2} + \frac{151}{2x + 3}$

26 The zeros for $f(x) = x^4 - 4x^3 - 9x^2 + 36x$ are

- 1) $\{0, \pm 3, 4\}$
- 2) $\{0, 3, 4\}$
- 3) $\{0, \pm 3, -4\}$
- 4) $\{0, 3, -4\}$

27 Which equation represents a parabola with a focus of $(0, 4)$ and a directrix of $y = 2$?

- 1) $y = x^2 + 3$
- 2) $y = -x^2 + 1$
- 3) $y = \frac{x^2}{2} + 3$
- 4) $y = \frac{x^2}{4} + 3$

28 A sine function increasing through the origin can be used to model light waves. Violet light has a wavelength of 400 nanometers. Over which interval is the height of the wave *decreasing*, only?

- 1) $(0, 200)$
- 2) $(100, 300)$
- 3) $(200, 400)$
- 4) $(300, 400)$

29 The set of data in the table below shows the results of a survey on the number of messages that people of different ages text on their cell phones each month.

Age Group	Text Messages per Month		
	0–10	11–50	Over 50
15–18	4	37	68
19–22	6	25	87
23–60	25	47	157

If a person from this survey is selected at random, what is the probability that the person texts over 50 messages per month given that the person is between the ages of 23 and 60?

- 1) $\frac{157}{229}$
- 2) $\frac{157}{312}$
- 3) $\frac{157}{384}$
- 4) $\frac{157}{456}$

30 The lifespan of a 60-watt lightbulb produced by a company is normally distributed with a mean of 1450 hours and a standard deviation of 8.5 hours. If a 60-watt lightbulb produced by this company is selected at random, what is the probability that its lifespan will be between 1440 and 1465 hours?

- 1) 0.3803
- 2) 0.4612
- 3) 0.8415
- 4) 0.9612

Algebra II CCSS Multiple Choice Regents Exam Questions

www.jmap.org

- 31 The expression $\frac{4x^3 + 5x + 10}{2x + 3}$ is equivalent to
- 1) $2x^2 + 3x - 7 + \frac{31}{2x + 3}$
 - 2) $2x^2 - 3x + 7 - \frac{11}{2x + 3}$
 - 3) $2x^2 + 2.5x + 5 + \frac{15}{2x + 3}$
 - 4) $2x^2 - 2.5x - 5 - \frac{20}{2x + 3}$
- 32 A rabbit population doubles every 4 weeks. There are currently five rabbits in a restricted area. If t represents the time, in weeks, and $P(t)$ is the population of rabbits with respect to time, about how many rabbits will there be in 98 days?
- 1) 56
 - 2) 152
 - 3) 3688
 - 4) 81,920
- 33 Which binomial is *not* a factor of the expression $x^3 - 11x^2 + 16x + 84$?
- 1) $x + 2$
 - 2) $x + 4$
 - 3) $x - 6$
 - 4) $x - 7$
- 34 The equation $4x^2 - 24x + 4y^2 + 72y = 76$ is equivalent to
- 1) $4(x - 3)^2 + 4(y + 9)^2 = 76$
 - 2) $4(x - 3)^2 + 4(y + 9)^2 = 121$
 - 3) $4(x - 3)^2 + 4(y + 9)^2 = 166$
 - 4) $4(x - 3)^2 + 4(y + 9)^2 = 436$
- 35 A public opinion poll was conducted on behalf of Mayor Ortega's reelection campaign shortly before the election. 264 out of 550 likely voters said they would vote for Mayor Ortega; the rest said they would vote for his opponent. Which statement is *least* appropriate to make, according to the results of the poll?
- 1) There is a 48% chance that Mayor Ortega will win the election.
 - 2) The point estimate (\hat{p}) of voters who will vote for Mayor Ortega is 48%.
 - 3) It is most likely that between 44% and 52% of voters will vote for Mayor Ortega.
 - 4) Due to the margin of error, an inference cannot be made regarding whether Mayor Ortega or his opponent is most likely to win the election.
- 36 The expression $6xi^3(-4xi + 5)$ is equivalent to
- 1) $2x - 5i$
 - 2) $-24x^2 - 30xi$
 - 3) $-24x^2 + 30x - i$
 - 4) $26x - 24x^2i - 5i$
- 37 Julie averaged 85 on the first three tests of the semester in her mathematics class. If she scores 93 on each of the remaining tests, her average will be 90. Which equation could be used to determine how many tests, T , are left in the semester?
- 1) $\frac{255 + 93T}{3T} = 90$
 - 2) $\frac{255 + 90T}{3T} = 93$
 - 3) $\frac{255 + 93T}{T + 3} = 90$
 - 4) $\frac{255 + 90T}{T + 3} = 93$

Algebra II CCSS Multiple Choice Regents Exam Questions

www.jmap.org

- 38 What is the solution, if any, of the equation

$$\frac{2}{x+3} - \frac{3}{4-x} = \frac{2x-2}{x^2-x-12}?$$

- 1) -1
- 2) -5
- 3) all real numbers
- 4) no real solution

- 39 Given $f(9) = -2$, which function can be used to generate the sequence $-8, -7.25, -6.5, -5.75, \dots$?

- 1) $f(n) = -8 + 0.75n$
- 2) $f(n) = -8 - 0.75(n-1)$
- 3) $f(n) = -8.75 + 0.75n$
- 4) $f(n) = -0.75 + 8(n-1)$

- 40 Iridium-192 is an isotope of iridium and has a half-life of 73.83 days. If a laboratory experiment begins with 100 grams of Iridium-192, the number of grams, A , of Iridium-192 present after t days

would be $A = 100\left(\frac{1}{2}\right)^{\frac{t}{73.83}}$. Which equation

approximates the amount of Iridium-192 present after t days?

- 1) $A = 100\left(\frac{73.83}{2}\right)^t$
- 2) $A = 100\left(\frac{1}{147.66}\right)^t$
- 3) $A = 100(0.990656)^t$
- 4) $A = 100(0.116381)^t$

- 41 What is the inverse of the function $y = \log_3 x$?

- 1) $y = x^3$
- 2) $y = \log_x 3$
- 3) $y = 3^x$
- 4) $x = 3^y$

- 42 Which statement is *incorrect* for the graph of the

function $y = -3 \cos\left[\frac{\pi}{3}(x-4)\right] + 7$?

- 1) The period is 6.
- 2) The amplitude is 3.
- 3) The range is $[4, 10]$.
- 4) The midline is $y = -4$.

- 43 If the terminal side of angle θ , in standard position, passes through point $(-4, 3)$, what is the numerical value of $\sin \theta$?

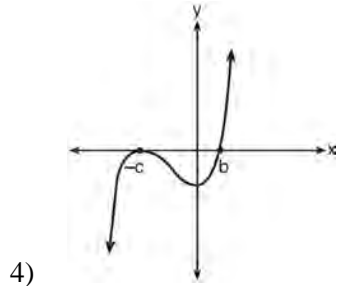
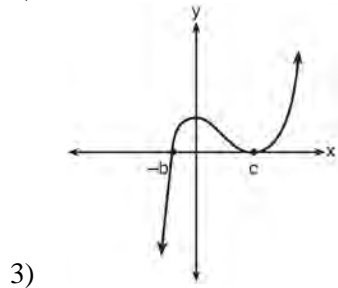
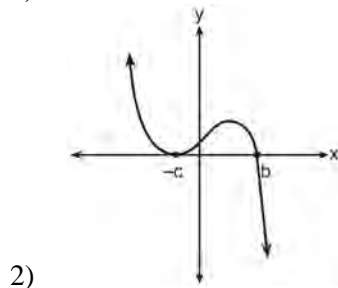
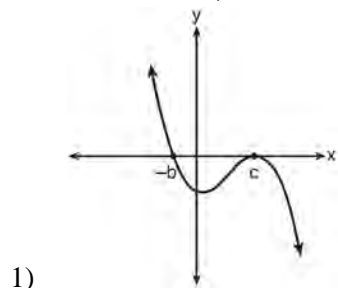
- 1) $\frac{3}{5}$
- 2) $\frac{4}{5}$
- 3) $-\frac{3}{5}$
- 4) $-\frac{4}{5}$

- 44 If $p(x) = ab^x$ and $r(x) = cd^x$, then $p(x) \cdot r(x)$ equals

- 1) $ac(b+d)^x$
- 2) $ac(b+d)^{2x}$
- 3) $ac(bd)^x$
- 4) $ac(bd)^{x^2}$

- 49 If a , b , and c are all positive real numbers, which graph could represent the sketch of the graph of

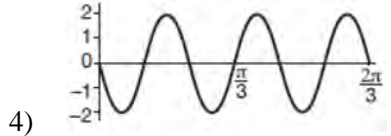
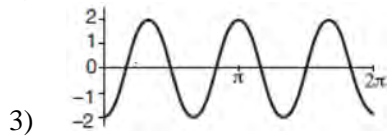
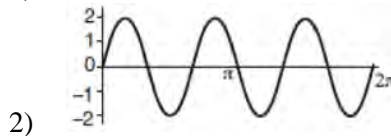
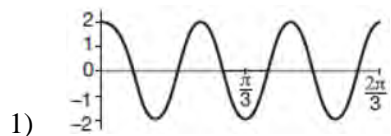
$$p(x) = -a(x+b)(x^2 - 2cx + c^2)?$$



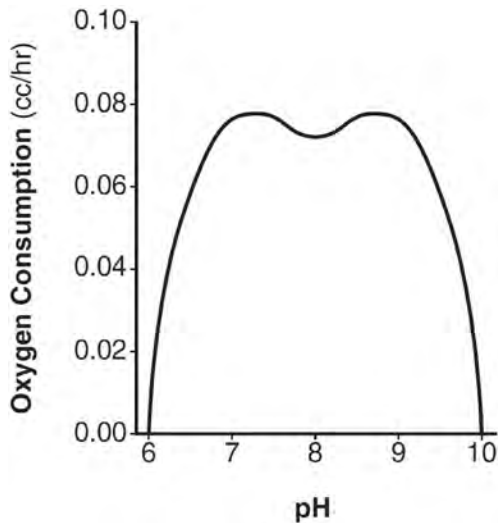
- 50 Cheap and Fast gas station is conducting a consumer satisfaction survey. Which method of collecting data would most likely lead to a biased sample?

- 1) interviewing every 5th customer to come into the station
- 2) interviewing customers chosen at random by a computer at the checkout
- 3) interviewing customers who call an 800 number posted on the customers' receipts
- 4) interviewing every customer who comes into the station on a day of the week chosen at random out of a hat

- 51 Which graph represents a cosine function with no horizontal shift, an amplitude of 2, and a period of $\frac{2\pi}{3}$?



- 52 There was a study done on oxygen consumption of snails as a function of pH, and the result was a degree 4 polynomial function whose graph is shown below.



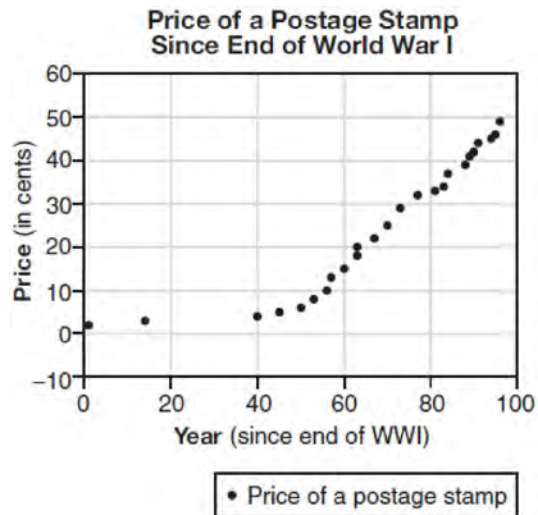
Which statement about this function is *incorrect*?

- 1) The degree of the polynomial is even.
- 2) There is a positive leading coefficient.
- 3) At two pH values, there is a relative maximum value.
- 4) There are two intervals where the function is decreasing.

- 53 The inverse of the function $f(x) = \frac{x+1}{x-2}$ is

- 1) $f^{-1}(x) = \frac{x+1}{x+2}$
- 2) $f^{-1}(x) = \frac{2x+1}{x-1}$
- 3) $f^{-1}(x) = \frac{x+1}{x-2}$
- 4) $f^{-1}(x) = \frac{x-1}{x+1}$

- 54 The price of a postage stamp in the years since the end of World War I is shown in the scatterplot below.



The equation that best models the price, in cents, of a postage stamp based on these data is

- 1) $y = 0.59x - 14.82$
- 2) $y = 1.04(1.43)^x$
- 3) $y = 1.43(1.04)^x$
- 4) $y = 24 \sin(14x) + 25$

- 55 A circle centered at the origin has a radius of 10 units. The terminal side of an angle, θ , intercepts the circle in Quadrant II at point C . The y -coordinate of point C is 8. What is the value of $\cos \theta$?

- 1) $-\frac{3}{5}$
- 2) $-\frac{3}{4}$
- 3) $\frac{3}{5}$
- 4) $\frac{4}{5}$

- 56 The focal length, F , of a camera's lens is related to the distance of the object from the lens, J , and the distance to the image area in the camera, W , by the formula below.

$$\frac{1}{J} + \frac{1}{W} = \frac{1}{F}$$

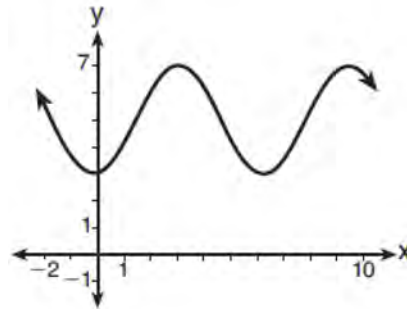
When this equation is solved for J in terms of F and W , J equals

- 1) $F - W$
 - 2) $\frac{FW}{F - W}$
 - 3) $\frac{FW}{W - F}$
 - 4) $\frac{1}{F} - \frac{1}{W}$
- 57 According to a pricing website, Indroid phones lose 58% of their cash value over 1.5 years. Which expression can be used to estimate the value of a \$300 Indroid phone in 1.5 years?
- 1) $300e^{-0.87}$
 - 2) $300e^{-0.63}$
 - 3) $300e^{-0.58}$
 - 4) $300e^{-0.42}$

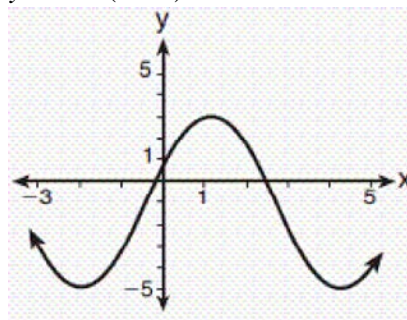
- 58 If $g(c) = 1 - c^2$ and $m(c) = c + 1$, then which statement is *not* true?

- 1) $g(c) \cdot m(c) = 1 + c - c^2 - c^3$
- 2) $g(c) + m(c) = 2 + c - c^2$
- 3) $m(c) - g(c) = c + c^2$
- 4) $\frac{m(c)}{g(c)} = \frac{-1}{1 - c}$

- 59 Which sinusoid has the greatest amplitude?



- 1)
- 2) $y = 3 \sin(\theta - 3) + 5$



- 3)
- 4) $y = -5 \sin(\theta - 1) - 3$

- 60 Which statement regarding the graphs of the functions below is *untrue*?

$$f(x) = 3 \sin 2x, \text{ from } -\pi < x < \pi$$

$$g(x) = (x - 0.5)(x + 4)(x - 2)$$

$$h(x) = \log_2 x$$

$$j(x) = -|4x - 2| + 3$$

- 1) $f(x)$ and $j(x)$ have a maximum y -value of 3.
- 2) $f(x)$, $h(x)$, and $j(x)$ have one y -intercept.
- 3) $g(x)$ and $j(x)$ have the same end behavior as $x \rightarrow -\infty$.
- 4) $g(x)$, $h(x)$, and $j(x)$ have rational zeros.

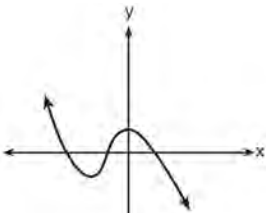
Algebra II CCSS Multiple Choice Regents Exam Questions

www.jmap.org

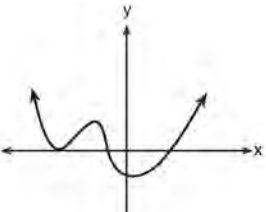
- 61 Given $f^{-1}(x) = -\frac{3}{4}x + 2$, which equation represents $f(x)$?
- 1) $f(x) = \frac{4}{3}x - \frac{8}{3}$
 - 2) $f(x) = -\frac{4}{3}x + \frac{8}{3}$
 - 3) $f(x) = \frac{3}{4}x - 2$
 - 4) $f(x) = -\frac{3}{4}x + 2$
- 62 The distribution of the diameters of ball bearings made under a given manufacturing process is normally distributed with a mean of 4 cm and a standard deviation of 0.2 cm. What proportion of the ball bearings will have a diameter less than 3.7 cm?
- 1) 0.0668
 - 2) 0.4332
 - 3) 0.8664
 - 4) 0.9500
- 63 An equation to represent the value of a car after t months of ownership is $v = 32,000(0.81)^{\frac{t}{12}}$. Which statement is *not* correct?
- 1) The car lost approximately 19% of its value each month.
 - 2) The car maintained approximately 98% of its value each month.
 - 3) The value of the car when it was purchased was \$32,000.
 - 4) The value of the car 1 year after it was purchased was \$25,920.
- 64 The heights of women in the United States are normally distributed with a mean of 64 inches and a standard deviation of 2.75 inches. The percent of women whose heights are between 64 and 69.5 inches, to the *nearest whole percent*, is
- 1) 6
 - 2) 48
 - 3) 68
 - 4) 95
- 65 The eighth and tenth terms of a sequence are 64 and 100. If the sequence is either arithmetic or geometric, the ninth term can *not* be
- 1) -82
 - 2) -80
 - 3) 80
 - 4) 82
- 66 A parabola has its focus at (1,2) and its directrix is $y = -2$. The equation of this parabola could be
- 1) $y = 8(x + 1)^2$
 - 2) $y = \frac{1}{8}(x + 1)^2$
 - 3) $y = 8(x - 1)^2$
 - 4) $y = \frac{1}{8}(x - 1)^2$
- 67 Which value, to the *nearest tenth*, is *not* a solution of $p(x) = q(x)$ if $p(x) = x^3 + 3x^2 - 3x - 1$ and $q(x) = 3x + 8$?
- 1) -3.9
 - 2) -1.1
 - 3) 2.1
 - 4) 4.7

68 Which graph has the following characteristics?

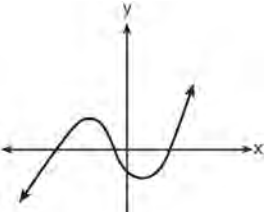
- three real zeros
- as $x \rightarrow -\infty$, $f(x) \rightarrow -\infty$
- as $x \rightarrow \infty$, $f(x) \rightarrow \infty$



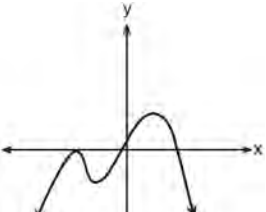
1)



2)



3)



4)

69 The solution to the equation $4x^2 + 98 = 0$ is

- 1) ± 7
- 2) $\pm 7i$
- 3) $\pm \frac{7\sqrt{2}}{2}$
- 4) $\pm \frac{7i\sqrt{2}}{2}$

70 The formula below can be used to model which scenario?

$$a_1 = 3000$$

$$a_n = 0.80a_{n-1}$$

- 1) The first row of a stadium has 3000 seats, and each row thereafter has 80 more seats than the row in front of it.
- 2) The last row of a stadium has 3000 seats, and each row before it has 80 fewer seats than the row behind it.
- 3) A bank account starts with a deposit of \$3000, and each year it grows by 80%.
- 4) The initial value of a specialty toy is \$3000, and its value each of the following years is 20% less.

71 The value of a new car depreciates over time. Greg purchased a new car in June 2011. The value, V , of his car after t years can be modeled by the equation

$$\log_{0.8} \left(\frac{V}{1700} \right) = t.$$

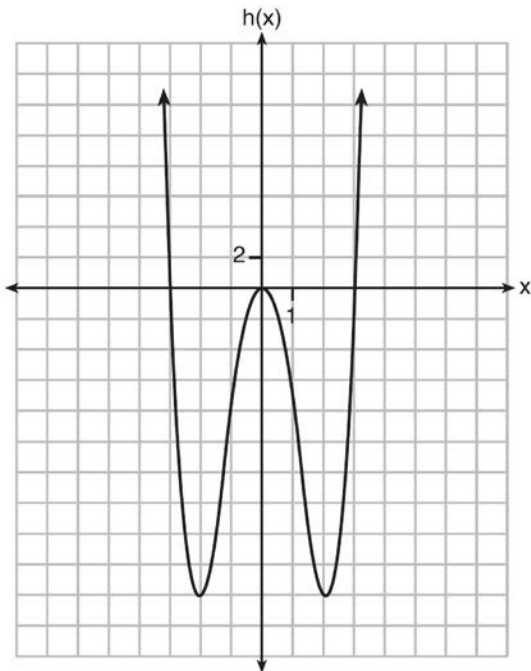
What is the average decreasing rate of change per year of the value of the car from June 2012 to June 2014, to the *nearest ten dollars per year*?

- 1) 1960
- 2) 2180
- 3) 2450
- 4) 2770

72 Functions f , g , and h are given below.

$$f(x) = \sin(2x)$$

$$g(x) = f(x) + 1$$



Which statement is true about functions f , g , and h ?

- 1) $f(x)$ and $g(x)$ are odd, $h(x)$ is even.
- 2) $f(x)$ and $g(x)$ are even, $h(x)$ is odd.
- 3) $f(x)$ is odd, $g(x)$ is neither, $h(x)$ is even.
- 4) $f(x)$ is even, $g(x)$ is neither, $h(x)$ is odd.

73 The voltage used by most households can be modeled by a sine function. The maximum voltage is 120 volts, and there are 60 cycles *every second*. Which equation best represents the value of the voltage as it flows through the electric wires, where t is time in seconds?

- 1) $V = 120 \sin(t)$
- 2) $V = 120 \sin(60t)$
- 3) $V = 120 \sin(60\pi t)$
- 4) $V = 120 \sin(120\pi t)$

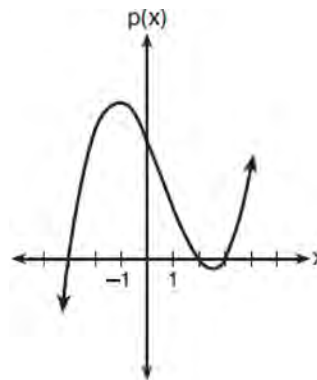
74 The solutions to the equation $-\frac{1}{2}x^2 = -6x + 20$ are

- 1) $-6 \pm 2i$
- 2) $-6 \pm 2\sqrt{19}$
- 3) $6 \pm 2i$
- 4) $6 \pm 2\sqrt{19}$

75 A ball is dropped from a height of 32 feet. It bounces and rebounds 80% of the height from which it was falling. What is the total downward distance, in feet, the ball traveled up to the 12th bounce?

- 1) 29
- 2) 58
- 3) 120
- 4) 149

76 The graph of the function $p(x)$ is sketched below.



Which equation could represent $p(x)$?

- 1) $p(x) = (x^2 - 9)(x - 2)$
- 2) $p(x) = x^3 - 2x^2 + 9x + 18$
- 3) $p(x) = (x^2 + 9)(x - 2)$
- 4) $p(x) = x^3 + 2x^2 - 9x - 18$

Algebra II CCSS Multiple Choice Regents Exam Questions

www.jmap.org

- 77 Joelle has a credit card that has a 19.2% annual interest rate compounded monthly. She owes a total balance of B dollars after m months. Assuming she makes no payments on her account, the table below illustrates the balance she owes after m months.

m	B
0	100.00
10	1172.00
19	1352.00
36	1770.80
60	2591.90
69	2990.00
72	3135.80
73	3186.00

Over which interval of time is her average rate of change for the balance on her credit card account the greatest?

- 1) month 10 to month 60
 2) month 19 to month 69
 3) month 36 to month 72
 4) month 60 to month 73

- 78 In 2010, the population of New York State was approximately 19,378,000 with an annual growth rate of 1.5%. Assuming the growth rate is maintained for a large number of years, which equation can be used to predict the population of New York State t years after 2010?

- 1) $P_t = 19,378,000(1.5)^t$
 2) $P_0 = 19,378,000$
 $P_t = 19,378,000 + 1.015P_{t-1}$
 3) $P_t = 19,378,000(1.015)^{t-1}$
 4) $P_0 = 19,378,000$
 $P_t = 1.015P_{t-1}$

- 80 The expression $\left(\frac{m^2}{m^{\frac{1}{3}}}\right)^{-\frac{1}{2}}$ is equivalent to

- 1) $-\sqrt[6]{m^5}$
 2) $\frac{1}{\sqrt[6]{m^5}}$
 3) $-\sqrt[5]{m}$
 4) $\frac{1}{m^5\sqrt{m}}$

- 79 Which statement about the graph of $c(x) = \log_6 x$ is false?

- 1) The asymptote has equation $y = 0$.
 2) The graph has no y-intercept.
 3) The domain is the set of positive reals.
 4) The range is the set of all real numbers.

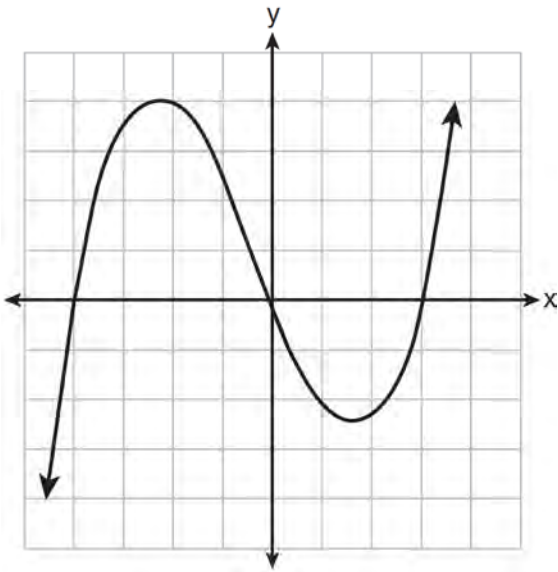
- 81 To the nearest tenth, the value of x that satisfies

$$2^x = -2x + 11$$

- 1) 2.5
 2) 2.6
 3) 5.8
 4) 5.9

- 82 Sean's team has a baseball game tomorrow. He pitches 50% of the games. There is a 40% chance of rain during the game tomorrow. If the probability that it rains given that Sean pitches is 40%, it can be concluded that these two events are
- 1) independent
 - 2) dependent
 - 3) mutually exclusive
 - 4) complements

- 83 The graph of $p(x)$ is shown below.



What is the remainder when $p(x)$ is divided by $x + 4$?

- 1) $x - 4$
- 2) -4
- 3) 0
- 4) 4

- 84 What does $\left(\frac{-54x^9}{y^4}\right)^{\frac{2}{3}}$ equal?

- 1) $\frac{9ix^6\sqrt[3]{4}}{y^2\sqrt[3]{y^2}}$
- 2) $\frac{9ix^6\sqrt[3]{4}}{y^2\sqrt[3]{y^2}}$
- 3) $\frac{9x^6\sqrt[3]{4}}{y^2\sqrt[3]{y}}$
- 4) $\frac{9x^6\sqrt[3]{4}}{y^2\sqrt[3]{y^2}}$

- 85 Consider the system shown below.

$$2x - y = 4$$

$$(x + 3)^2 + y^2 = 8$$

The two solutions of the system can be described as

- 1) both imaginary
- 2) both irrational
- 3) both rational
- 4) one rational and one irrational

- 86 Given i is the imaginary unit, $(2 - yi)^2$ in simplest form is

- 1) $y^2 - 4yi + 4$
- 2) $-y^2 - 4yi + 4$
- 3) $-y^2 + 4$
- 4) $y^2 + 4$

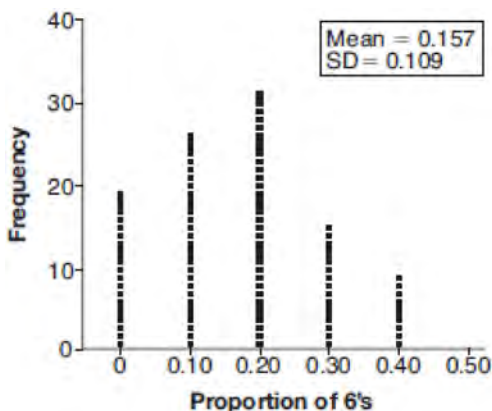
- 87 Pedro and Bobby each own an ant farm. Pedro starts with 100 ants and says his farm is growing exponentially at a rate of 15% per month. Bobby starts with 350 ants and says his farm is steadily decreasing by 5 ants per month. Assuming both boys are accurate in describing the population of their ant farms, after how many months will they both have approximately the same number of ants?
- 1) 7
 - 2) 8
 - 3) 13
 - 4) 36

- 88 A game spinner is divided into 6 equally sized regions, as shown in the diagram below.



For Miles to win, the spinner must land on the number 6. After spinning the spinner 10 times, and losing all 10 times, Miles complained that the spinner is unfair. At home, his dad ran 100 simulations of spinning the spinner 10 times, assuming the probability of winning each spin is $\frac{1}{6}$.

The output of the simulation is shown in the diagram below.



Which explanation is appropriate for Miles and his dad to make?

- 1) The spinner was likely unfair, since the number 6 failed to occur in about 20% of the simulations.
- 2) The spinner was likely unfair, since the spinner should have landed on the number 6 by the sixth spin.
- 3) The spinner was likely not unfair, since the number 6 failed to occur in about 20% of the simulations.
- 4) The spinner was likely not unfair, since in the output the player wins once or twice in the majority of the simulations.

- 89 The solution set for the equation

$$\sqrt{x + 14} - \sqrt{2x + 5} = 1$$

- 1) $\{-6\}$
- 2) $\{2\}$
- 3) $\{18\}$
- 4) $\{2, 22\}$

- 90 Jasmine decides to put \$100 in a savings account each month. The account pays 3% annual interest, compounded monthly. How much money, S , will Jasmine have after one year?

- 1) $S = 100(1.03)^{12}$
- 2) $S = \frac{100 - 100(1.0025)^{12}}{1 - 1.0025}$
- 3) $S = 100(1.0025)^{12}$
- 4) $S = \frac{100 - 100(1.03)^{12}}{1 - 1.03}$

Algebra II CCSS Multiple Choice Regents Exam Questions

www.jmap.org

91 Relative to the graph of $y = 3 \sin x$, what is the shift of the graph of $y = 3 \sin\left(x + \frac{\pi}{3}\right)$?

- 1) $\frac{\pi}{3}$ right
- 2) $\frac{\pi}{3}$ left
- 3) $\frac{\pi}{3}$ up
- 4) $\frac{\pi}{3}$ down

92 Mr. Farison gave his class the three mathematical rules shown below to either prove or disprove. Which rules can be proved for all real numbers?

- I $(m + p)^2 = m^2 + 2mp + p^2$
- II $(x + y)^3 = x^3 + 3xy + y^3$
- III $(a^2 + b^2)^2 = (a^2 - b^2)^2 + (2ab)^2$

- 1) I, only
- 2) I and II
- 3) II and III
- 4) I and III

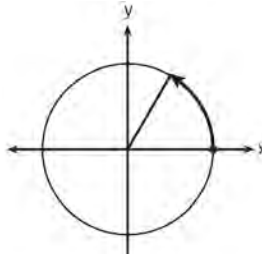
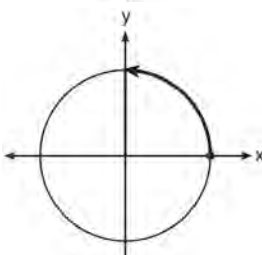
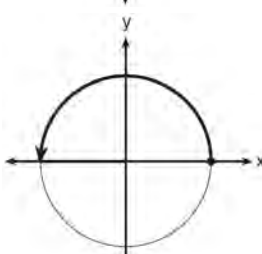
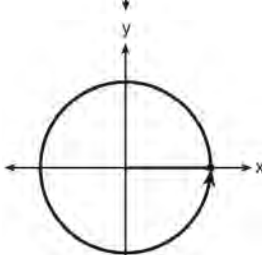
93 Which expression has been rewritten correctly to form a true statement?

- 1) $(x + 2)^2 + 2(x + 2) - 8 = (x + 6)x$
- 2) $x^4 + 4x^2 + 9x^2y^2 - 36y^2 = (x + 3y)^2(x - 2)^2$
- 3) $x^3 + 3x^2 - 4xy^2 - 12y^2 = (x - 2y)(x + 3)^2$
- 4) $(x^2 - 4)^2 - 5(x^2 - 4) - 6 = (x^2 - 7)(x^2 - 6)$

94 Which equation represents a parabola with the focus at $(0, -1)$ and the directrix of $y = 1$?

- 1) $x^2 = -8y$
- 2) $x^2 = -4y$
- 3) $x^2 = 8y$
- 4) $x^2 = 4y$

95 Which diagram shows an angle rotation of 1 radian on the unit circle?

- 1) 
- 2) 
- 3) 
- 4) 

- 96 Kristin wants to increase her running endurance. According to experts, a gradual mileage increase of 10% per week can reduce the risk of injury. If Kristin runs 8 miles in week one, which expression can help her find the total number of miles she will have run over the course of her 6-week training program?

- 1) $\sum_{n=1}^6 8(1.10)^{n-1}$
- 2) $\sum_{n=1}^6 8(1.10)^n$
- 3) $\frac{8 - 8(1.10)^6}{0.90}$
- 4) $\frac{8 - 8(0.10)^n}{1.10}$

- 97 Sally's high school is planning their spring musical. The revenue, R , generated can be determined by the function $R(t) = -33t^2 + 360t$, where t represents the price of a ticket. The production cost, C , of the musical is represented by the function $C(t) = 700 + 5t$. What is the highest ticket price, to the *nearest dollar*, they can charge in order to *not* lose money on the event?

- 1) $t = 3$
- 2) $t = 5$
- 3) $t = 8$
- 4) $t = 11$

- 98 What is the completely factored form of

$$k^4 - 4k^2 + 8k^3 - 32k + 12k^2 - 48?$$

- 1) $(k - 2)(k - 2)(k + 3)(k + 4)$
- 2) $(k - 2)(k - 2)(k + 6)(k + 2)$
- 3) $(k + 2)(k - 2)(k + 3)(k + 4)$
- 4) $(k + 2)(k - 2)(k + 6)(k + 2)$

- 99 Given that $\sin^2 \theta + \cos^2 \theta = 1$ and $\sin \theta = -\frac{\sqrt{2}}{5}$, what is a possible value of $\cos \theta$?

- 1) $\frac{5 + \sqrt{2}}{5}$
- 2) $\frac{\sqrt{23}}{5}$
- 3) $\frac{3\sqrt{3}}{5}$
- 4) $\frac{\sqrt{35}}{5}$

- 100 A recursive formula for the sequence 18, 9, 4.5, ... is

- 1) $g_1 = 18$
 $g_n = \frac{1}{2} g_{n-1}$
- 2) $g_n = 18 \left(\frac{1}{2} \right)^{n-1}$
- 3) $g_1 = 18$
 $g_n = 2g_{n-1}$
- 4) $g_n = 18(2)^{n-1}$

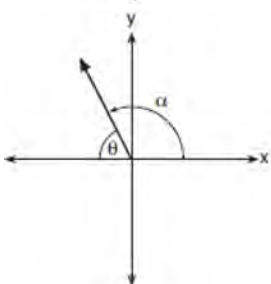
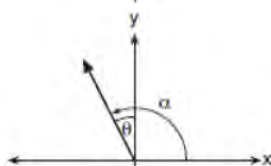
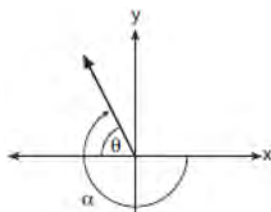
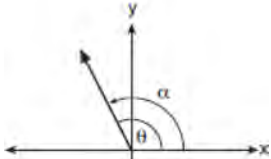
- 101 The probability that Gary and Jane have a child with blue eyes is 0.25, and the probability that they have a child with blond hair is 0.5. The probability that they have a child with both blue eyes and blond hair is 0.125. Given this information, the events blue eyes and blond hair are

- I: dependent
II: independent
III: mutually exclusive

- 1) I, only
- 2) II, only
- 3) I and III
- 4) II and III

- 102 The solution to the equation $18x^2 - 24x + 87 = 0$ is
- 1) $-\frac{2}{3} \pm 6i\sqrt{158}$
 - 2) $-\frac{2}{3} \pm \frac{1}{6}i\sqrt{158}$
 - 3) $\frac{2}{3} \pm 6i\sqrt{158}$
 - 4) $\frac{2}{3} \pm \frac{1}{6}i\sqrt{158}$
- 103 Which expression is equivalent to $\frac{4x^3 + 9x - 5}{2x - 1}$, where $x \neq \frac{1}{2}$?
- 1) $2x^2 + x + 5$
 - 2) $2x^2 + \frac{11}{2} + \frac{1}{2(2x - 1)}$
 - 3) $2x^2 - x + 5$
 - 4) $2x^2 - x + 4 + \frac{1}{2x - 1}$
- 104 A study of the annual population of the red-winged blackbird in Ft. Mill, South Carolina, shows the population, $B(t)$, can be represented by the function $B(t) = 750(1.16)^t$, where the t represents the number of years since the study began. In terms of the monthly rate of growth, the population of red-winged blackbirds can be best approximated by the function
- 1) $B(t) = 750(1.012)^t$
 - 2) $B(t) = 750(1.012)^{12t}$
 - 3) $B(t) = 750(1.16)^{12t}$
 - 4) $B(t) = 750(1.16)^{\frac{t}{12}}$
- 105 Mallory wants to buy a new window air conditioning unit. The cost for the unit is \$329.99. If she plans to run the unit three months out of the year for an annual operating cost of \$108.78, which function models the cost per year over the lifetime of the unit, $C(n)$, in terms of the number of years, n , that she owns the air conditioner.
- 1) $C(n) = 329.99 + 108.78n$
 - 2) $C(n) = 329.99 + 326.34n$
 - 3) $C(n) = \frac{329.99 + 108.78n}{n}$
 - 4) $C(n) = \frac{329.99 + 326.34n}{n}$
- 106 Last year, the total revenue for Home Style, a national restaurant chain, increased 5.25% over the previous year. If this trend were to continue, which expression could the company's chief financial officer use to approximate their monthly percent increase in revenue? [Let m represent months.]
- 1) $(1.0525)^m$
 - 2) $(1.0525)^{\frac{12}{m}}$
 - 3) $(1.00427)^m$
 - 4) $(1.00427)^{\frac{m}{12}}$
- 107 A manufacturing company has developed a cost model, $C(x) = 0.15x^3 + 0.01x^2 + 2x + 120$, where x is the number of items sold, in thousands. The sales price can be modeled by $S(x) = 30 - 0.01x$. Therefore, revenue is modeled by $R(x) = x \cdot S(x)$. The company's profit, $P(x) = R(x) - C(x)$, could be modeled by
- 1) $0.15x^3 + 0.02x^2 - 28x + 120$
 - 2) $-0.15x^3 - 0.02x^2 + 28x - 120$
 - 3) $-0.15x^3 + 0.01x^2 - 2.01x - 120$
 - 4) $-0.15x^3 + 32x + 120$

- 108 Which diagram represents an angle, α , measuring $\frac{13\pi}{20}$ radians drawn in standard position, and its reference angle, θ ?



- 109 Which function represents exponential decay?

- 1) $y = 2^{0.3t}$
- 2) $y = 1.2^{3t}$
- 3) $y = \left(\frac{1}{2}\right)^{-t}$
- 4) $y = 5^{-t}$

- 110 The function $f(x) = \frac{x-3}{x^2+2x-8}$ is undefined when

x equals

- 1) 2 or -4
- 2) 4 or -2
- 3) 3, only
- 4) 2, only

- 111 Which statement about statistical analysis is *false*?

- 1) Experiments can suggest patterns and relationships in data.
- 2) Experiments can determine cause and effect relationships.
- 3) Observational studies can determine cause and effect relationships.
- 4) Observational studies can suggest patterns and relationships in data.

- 112 The function $p(t) = 110e^{0.03922t}$ models the population of a city, in millions, t years after 2010. As of today, consider the following two statements:

- I. The current population is 110 million.
- II. The population increases continuously by approximately 3.9% per year.

This model supports

- 1) I, only
- 2) II, only
- 3) both I and II
- 4) neither I nor II

Algebra II CCSS Multiple Choice Regents Exam Questions

www.jmap.org

113 A solution of the equation $2x^2 + 3x + 2 = 0$ is

- 1) $-\frac{3}{4} + \frac{1}{4}i\sqrt{7}$
- 2) $-\frac{3}{4} + \frac{1}{4}i$
- 3) $-\frac{3}{4} + \frac{1}{4}\sqrt{7}$
- 4) $\frac{1}{2}$

114 To solve $\frac{2x}{x-2} - \frac{11}{x} = \frac{8}{x^2-2x}$, Ren multiplied

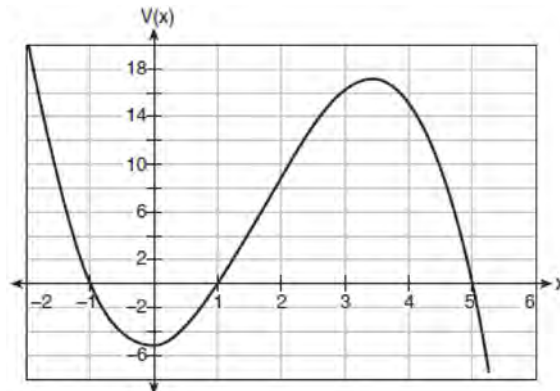
both sides by the least common denominator.
Which statement is true?

- 1) 2 is an extraneous solution.
- 2) $\frac{7}{2}$ is an extraneous solution.
- 3) 0 and 2 are extraneous solutions.
- 4) This equation does not contain any extraneous solutions.

115 The Rickerts decided to set up an account for their daughter to pay for her college education. The day their daughter was born, they deposited \$1000 in an account that pays 1.8% compounded annually. Beginning with her first birthday, they deposit an additional \$750 into the account on each of her birthdays. Which expression correctly represents the amount of money in the account n years after their daughter was born?

- 1) $a_n = 1000(1.018)^n + 750$
- 2) $a_n = 1000(1.018)^n + 750n$
- 3) $a_0 = 1000$
 $a_n = a_{n-1}(1.018) + 750$
- 4) $a_0 = 1000$
 $a_n = a_{n-1}(1.018) + 750n$

116 A cardboard box manufacturing company is building boxes with length represented by $x + 1$, width by $5 - x$, and height by $x - 1$. The volume of the box is modeled by the function below.



Over which interval is the volume of the box changing at the fastest average rate?

- 1) [1,2]
- 2) [1,3.5]
- 3) [1,5]
- 4) [0,3.5]

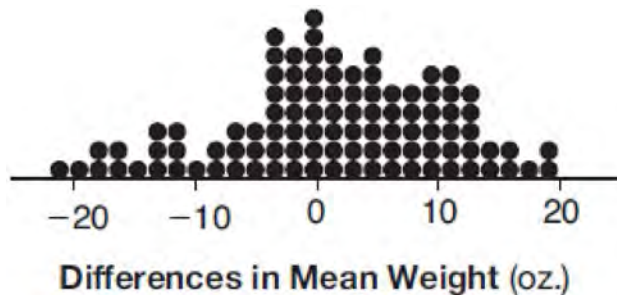
117 What is the solution to $8(2^{x+3}) = 48$?

- 1) $x = \frac{\ln 6}{\ln 2} - 3$
- 2) $x = 0$
- 3) $x = \frac{\ln 48}{\ln 16} - 3$
- 4) $x = \ln 4 - 3$

118 The solution set for the equation $\sqrt{56-x} = x$ is

- 1) $\{-8, 7\}$
- 2) $\{-7, 8\}$
- 3) $\{7\}$
- 4) $\{ \}$

- 119 Gabriel performed an experiment to see if planting 13 tomato plants in black plastic mulch leads to larger tomatoes than if 13 plants are planted without mulch. He observed that the average weight of the tomatoes from tomato plants grown in black plastic mulch was 5 ounces greater than those from the plants planted without mulch. To determine if the observed difference is statistically significant, he rerandomized the tomato groups 100 times to study these random differences in the mean weights. The output of his simulation is summarized in the dotplot below.

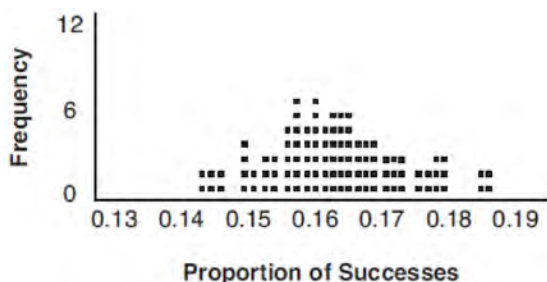


Given these results, what is an appropriate inference that can be drawn?

- | | |
|---|---|
| <p>1) There was no effect observed between the two groups.</p> <p>2) There was an effect observed that could be due to the random assignment of plants to the groups.</p> | <p>3) There is strong evidence to support the hypothesis that tomatoes from plants planted in black plastic mulch are larger than those planted without mulch.</p> <p>4) There is strong evidence to support the hypothesis that tomatoes from plants planted without mulch are larger than those planted in black plastic mulch.</p> |
|---|---|
-
- | | |
|--|--|
| <p>120 When $b > 0$ and d is a positive integer, the expression $(3b)^{\frac{2}{d}}$ is equivalent to</p> <p>1) $\frac{1}{\left(\sqrt[d]{3b}\right)^2}$</p> <p>2) $\left(\sqrt{3b}\right)^d$</p> <p>3) $\frac{1}{\sqrt{3b^d}}$</p> <p>4) $\left(\sqrt[d]{3b}\right)^2$</p> | <p>121 If $f(x) = 3 x - 1$ and $g(x) = 0.03x^3 - x + 1$, an approximate solution for the equation $f(x) = g(x)$ is</p> <p>1) 1.96</p> <p>2) 11.29</p> <p>3) $(-0.99, 1.96)$</p> <p>4) $(11.29, 32.87)$</p> |
| <p>122 What are the zeros of $P(m) = (m^2 - 4)(m^2 + 1)$?</p> <p>1) 2 and -2, only</p> <p>2) 2, -2, and -4</p> <p>3) $-4, i$, and $-i$</p> <p>4) 2, $-2, i$, and $-i$</p> | |

- 123 The function $f(x) = 2^{-0.25x} \cdot \sin\left(\frac{\pi}{2}x\right)$ represents a damped sound wave function. What is the average rate of change for this function on the interval $[-7, 7]$, to the nearest hundredth?
- 1) -3.66
 - 2) -0.30
 - 3) -0.26
 - 4) 3.36

- 124 A study conducted in 2004 in New York City found that 212 out of 1334 participants had hypertension. Kim ran a simulation of 100 studies based on these data. The output of the simulation is shown in the diagram below.

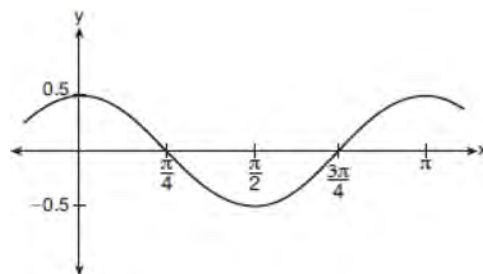


At a 95% confidence level, the proportion of New York City residents with hypertension and the margin of error are closest to

- 1) proportion $\approx .16$; margin of error $\approx .01$
 - 2) proportion $\approx .16$; margin of error $\approx .02$
 - 3) proportion $\approx .01$; margin of error $\approx .16$
 - 4) proportion $\approx .02$; margin of error $\approx .16$
- 125 As x increases from 0 to $\frac{\pi}{2}$, the graph of the equation $y = 2 \tan x$ will
- 1) increase from 0 to 2
 - 2) decrease from 0 to -2
 - 3) increase without limit
 - 4) decrease without limit

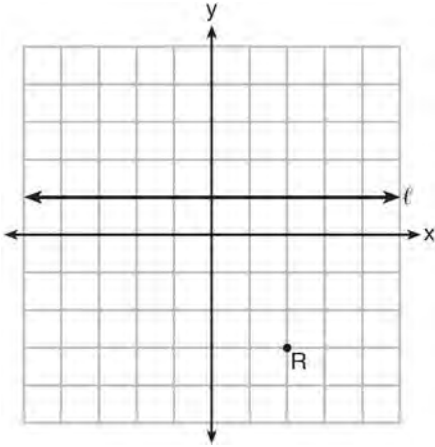
- 126 Which scenario is best described as an observational study?
- 1) For a class project, students in Health class ask every tenth student entering the school if they eat breakfast in the morning.
 - 2) A social researcher wants to learn whether or not there is a link between attendance and grades. She gathers data from 15 school districts.
 - 3) A researcher wants to learn whether or not there is a link between children's daily amount of physical activity and their overall energy level. During lunch at the local high school, she distributed a short questionnaire to students in the cafeteria.
 - 4) Sixty seniors taking a course in Advanced Algebra Concepts are randomly divided into two classes. One class uses a graphing calculator all the time, and the other class never uses graphing calculators. A guidance counselor wants to determine whether there is a link between graphing calculator use and students' final exam grades.

- 127 Which equation is represented by the graph shown below?



- 1) $y = \frac{1}{2} \cos 2x$
- 2) $y = \cos x$
- 3) $y = \frac{1}{2} \cos x$
- 4) $y = 2 \cos \frac{1}{2}x$

- 128 Which equation represents the set of points equidistant from line ℓ and point R shown on the graph below?



- 1) $y = -\frac{1}{8}(x+2)^2 + 1$
 - 2) $y = -\frac{1}{8}(x+2)^2 - 1$
 - 3) $y = -\frac{1}{8}(x-2)^2 + 1$
 - 4) $y = -\frac{1}{8}(x-2)^2 - 1$
- 129 A polynomial equation of degree three, $p(x)$, is used to model the volume of a rectangular box. The graph of $p(x)$ has x intercepts at -2 , 10 , and 14 . Which statements regarding $p(x)$ could be true?
- A. The equation of $p(x) = (x-2)(x+10)(x+14)$.
 - B. The equation of $p(x) = -(x+2)(x-10)(x-14)$.
 - C. The maximum volume occurs when $x = 10$.
 - D. The maximum volume of the box is approximately 56.
- 1) A and C
 - 2) A and D
 - 3) B and C
 - 4) B and D

- 130 Given the parent function $p(x) = \cos x$, which phrase best describes the transformation used to obtain the graph of $g(x) = \cos(x+a) - b$, if a and b are positive constants?

- 1) right a units, up b units
- 2) right a units, down b units
- 3) left a units, up b units
- 4) left a units, down b units

Algebra II Common Core State Standards 2 Point Regents Exam Questions

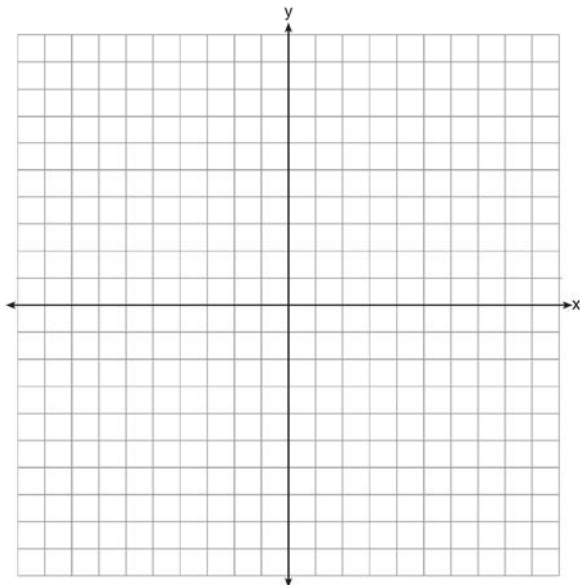
- 131 Use an appropriate procedure to show that $x - 4$ is a factor of the function $f(x) = 2x^3 - 5x^2 - 11x - 4$. Explain your answer.

- 132 The function $M(t)$ represents the mass of radium over time, t , in years.

$$M(t) = 100e^{\left(\ln \frac{1}{2}\right)t / 1590}$$

Determine if the function $M(t)$ represents growth or decay. Explain your reasoning.

- 133 On the axes below, graph *one* cycle of a cosine function with amplitude 3, period $\frac{\pi}{2}$, midline $y = -1$, and passing through the point $(0, 2)$.



- 134 A house purchased 5 years ago for \$100,000 was just sold for \$135,000. Assuming exponential growth, approximate the annual growth rate, to the nearest percent.

- 135 Explain how $(-8)^{\frac{4}{3}}$ can be evaluated using properties of rational exponents to result in an integer answer.

- 136 Elizabeth waited for 6 minutes at the drive thru at her favorite fast-food restaurant the last time she visited. She was upset about having to wait that long and notified the manager. The manager assured her that her experience was very unusual and that it would not happen again. A study of customers commissioned by this restaurant found an approximately normal distribution of results. The mean wait time was 226 seconds and the standard deviation was 38 seconds. Given these data, and using a 95% level of confidence, was Elizabeth's wait time unusual? Justify your answer.

- 137 Given the equal terms $\sqrt[3]{x^5}$ and $y^{\frac{5}{6}}$, determine and state y , in terms of x .

- 138 Algebraically determine whether the function $j(x) = x^4 - 3x^2 - 4$ is odd, even, or neither.

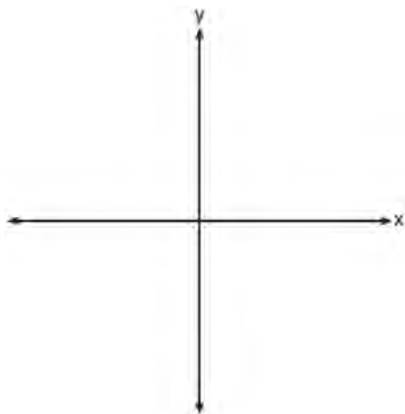
Algebra II Common Core State Standards 2 Point Regents Exam Questions

www.jmap.org

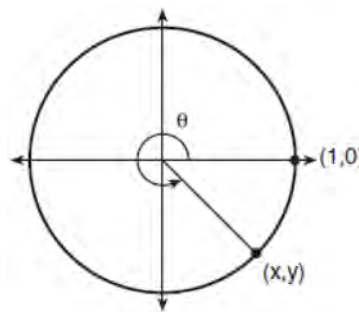
- 139 Determine if $x - 5$ is a factor of $2x^3 - 4x^2 - 7x - 10$. Explain your answer.

- 143 Solve algebraically for all values of x :
 $\sqrt{x - 5} + x = 7$

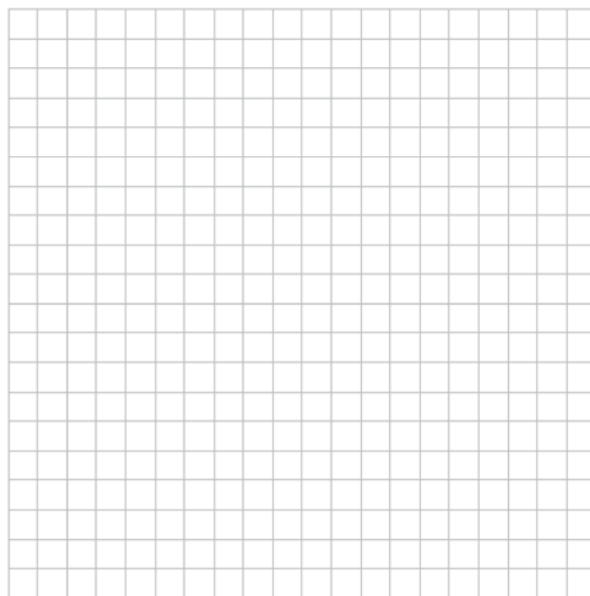
- 140 On the axes below, sketch a possible function $p(x) = (x - a)(x - b)(x + c)$, where a , b , and c are positive, $a > b$, and $p(x)$ has a positive y -intercept of d . Label all intercepts.



- 144 Using the unit circle below, explain why $\csc \theta = \frac{1}{y}$.



- 145 On the grid below, sketch a cubic polynomial whose zeros are 1, 3, and -2.



- 141 Use the properties of rational exponents to determine the value of y for the equation:

$$\frac{\sqrt[3]{x^8}}{(x^4)^{\frac{1}{3}}} = x^y, \quad x > 1$$

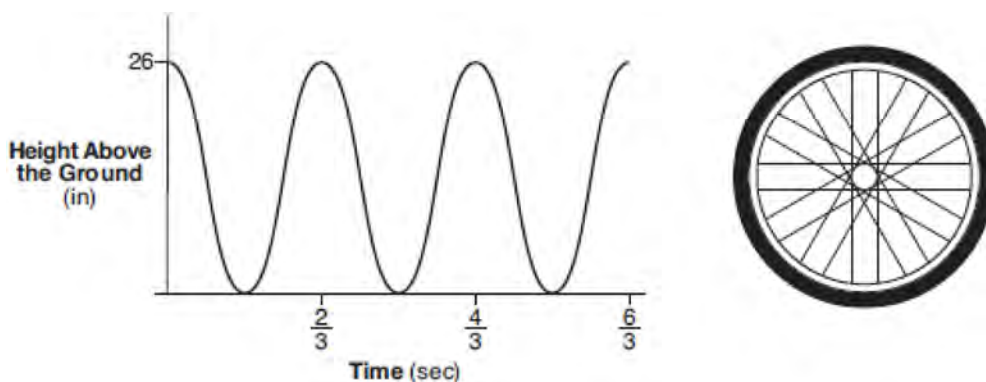
- 142 A suburban high school has a population of 1376 students. The number of students who participate in sports is 649. The number of students who participate in music is 433. If the probability that a student participates in either sports or music is $\frac{974}{1376}$, what is the probability that a student participates in both sports and music?

- 146 The distance needed to stop a car after applying the brakes varies directly with the square of the car's speed. The table below shows stopping distances for various speeds.

Speed (mph)	10	20	30	40	50	60	70
Distance (ft)	6.25	25	56.25	100	156.25	225	306.25

Determine the average rate of change in braking distance, in ft/mph, between one car traveling at 50 mph and one traveling at 70 mph. Explain what this rate of change means as it relates to braking distance.

- 147 The graph below represents the height above the ground, h , in inches, of a point on a triathlete's bike wheel during a training ride in terms of time, t , in seconds.



Identify the period of the graph and describe what the period represents in this context.

- 148 An orange-juice processing plant receives a truckload of oranges. The quality control team randomly chooses three pails of oranges, each containing 50 oranges, from the truckload. Identify the sample and the population in the given scenario. State *one* conclusion that the quality control team could make about the population if 5% of the sample was found to be unsatisfactory.
- 149 Simplify $xi(i - 7i)^2$, where i is the imaginary unit.
- 150 Using the identity $\sin^2 \theta + \cos^2 \theta = 1$, find the value of $\tan \theta$, to the *nearest hundredth*, if $\cos \theta$ is -0.7 and θ is in Quadrant II.
- 151 The weight of a bag of pears at the local market averages 8 pounds with a standard deviation of 0.5 pound. The weights of all the bags of pears at the market closely follow a normal distribution. Determine what percentage of bags, to the *nearest integer*, weighed *less* than 8.25 pounds.

- 152 The results of a survey of the student body at Central High School about television viewing preferences are shown below.

	Comedy Series	Drama Series	Reality Series	Total
Males	95	65	70	230
Females	80	70	110	260
Total	175	135	180	490

Are the events “student is a male” and “student prefers reality series” independent of each other? Justify your answer.

- 153 The results of a poll of 200 students are shown in the table below:

	Preferred Music Style		
	Techno	Rap	Country
Female	54	25	27
Male	36	40	18

For this group of students, do these data suggest that gender and preferred music styles are independent of each other? Justify your answer.

154 Given: $h(x) = \frac{2}{9}x^3 + \frac{8}{9}x^2 - \frac{16}{13}x + 2$

$$k(x) = -|0.7x| + 5$$

State the solutions to the equation $h(x) = k(x)$, rounded to the *nearest hundredth*.

- 155 A study was designed to test the effectiveness of a new drug. Half of the volunteers received the drug. The other half received a sugar pill. The probability of a volunteer receiving the drug and getting well was 40%. What is the probability of a volunteer getting well, given that the volunteer received the drug?

156 Write $\sqrt[3]{x} \cdot \sqrt{x}$ as a single term with a rational exponent.

- 157 While experimenting with her calculator, Candy creates the sequence 4, 9, 19, 39, 79, Write a recursive formula for Candy's sequence. Determine the eighth term in Candy's sequence.

- 158 The directrix of the parabola $12(y + 3) = (x - 4)^2$ has the equation $y = -6$. Find the coordinates of the focus of the parabola.

Algebra II Common Core State Standards 2 Point Regents Exam Questions

www.jmap.org

- 159 Write $(5 + 2yi)(4 - 3i) - (5 - 2yi)(4 - 3i)$ in $a + bi$ form, where y is a real number.
- 160 Solve algebraically for all values of x :
 $\sqrt{x-4} + x = 6$
- 161 Mrs. Jones had hundreds of jelly beans in a bag that contained equal numbers of six different flavors. Her student randomly selected four jelly beans and they were all black licorice. Her student complained and said "What are the odds I got all of that kind?" Mrs. Jones replied, "simulate rolling a die 250 times and tell me if four black licorice jelly beans is unusual." Explain how this simulation could be used to solve the problem.
- 162 The volume of air in a person's lungs, as the person breathes in and out, can be modeled by a sine graph. A scientist is studying the differences in this volume for people at rest compared to people told to take a deep breath. When examining the graphs, should the scientist focus on the amplitude, period, or midline? Explain your choice.
- 163 Express $(1 - i)^3$ in $a + bi$ form.
- 164 Explain how $\left(3^{\frac{1}{5}}\right)^2$ can be written as the equivalent radical expression $\sqrt[5]{9}$.
- 165 Describe how a controlled experiment can be created to examine the effect of ingredient X in a toothpaste.
- 166 Given $r(x) = x^3 - 4x^2 + 4x - 6$, find the value of $r(2)$. What does your answer tell you about $x - 2$ as a factor of $r(x)$? Explain.
- 167 Over the set of integers, factor the expression $4x^3 - x^2 + 16x - 4$ completely.
- 168 Algebraically prove that $\frac{x^3 + 9}{x^3 + 8} = 1 + \frac{1}{x^3 + 8}$, where $x \neq -2$.
- 169 Solve for x : $\frac{1}{x} - \frac{1}{3} = -\frac{1}{3x}$
- 170 Algebraically determine the values of x that satisfy the system of equations below.
 $y = -2x + 1$
 $y = -2x^2 + 3x + 1$
- 171 Verify the following Pythagorean identity for all values of x and y :
 $(x^2 + y^2)^2 = (x^2 - y^2)^2 + (2xy)^2$

172 Data collected about jogging from students with two older siblings are shown in the table below.

	Neither Sibling Jogs	One Sibling Jogs	Both Siblings Jogs
Student Does Not Jog	1168	1823	1380
Student Jogs	188	416	400

Using these data, determine whether a student with two older siblings is more likely to jog if one sibling jogs or if both siblings jog. Justify your answer.

173 The x -value of which function's x -intercept is larger, f or h ? Justify your answer.

$$f(x) = \log(x - 4)$$

x	h(x)
-1	6
0	4
1	2
2	0
3	-2

174 Algebraically prove that the difference of the squares of any two consecutive integers is an odd integer.

177 Given events A and B , such that $P(A) = 0.6$, $P(B) = 0.5$, and $P(A \cup B) = 0.8$, determine whether A and B are independent or dependent.

175 Rewrite the expression

$(4x^2 + 5x)^2 - 5(4x^2 + 5x) - 6$ as a product of four linear factors.

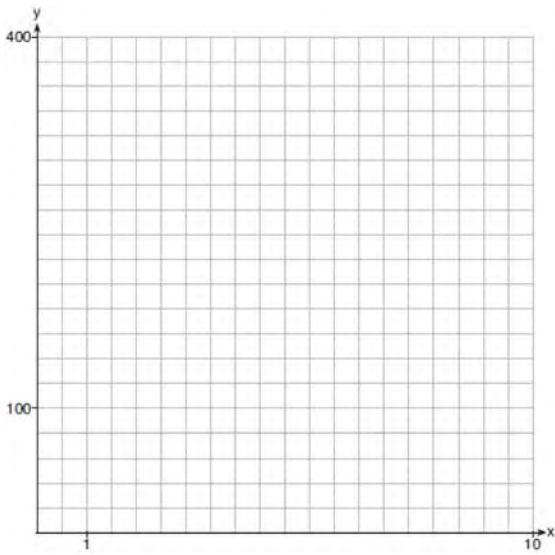
178 In New York State, the minimum wage has grown exponentially. In 1966, the minimum wage was \$1.25 an hour and in 2015, it was \$8.75. Algebraically determine the rate of growth to the nearest percent.

176 For the function $f(x) = (x - 3)^3 + 1$, find $f^{-1}(x)$.

179 Given $f(x) = 3x^2 + 7x - 20$ and $g(x) = x - 2$, state the quotient and remainder of $\frac{f(x)}{g(x)}$, in the form

$$q(x) + \frac{r(x)}{g(x)}.$$

180 Graph $y = 400(.85)^{2x} - 6$ on the set of axes below.



Algebra II Common Core State Standards 4 Point Regents Exam Questions

181 One of the medical uses of Iodine-131 (I-131), a radioactive isotope of iodine, is to enhance x-ray images. The half-life of I-131 is approximately 8.02 days. A patient is injected with 20 milligrams of I-131. Determine, to the *nearest day*, the amount of time needed before the amount of I-131 in the patient’s body is approximately 7 milligrams.

182 In contract negotiations between a local government agency and its workers, it is estimated that there is a 50% chance that an agreement will be reached on the salaries of the workers. It is estimated that there is a 70% chance that there will be an agreement on the insurance benefits. There is a 20% chance that no agreement will be reached on either issue. Find the probability that an agreement will be reached on *both* issues. Based on this answer, determine whether the agreement on salaries and the agreement on insurance are independent events. Justify your answer.

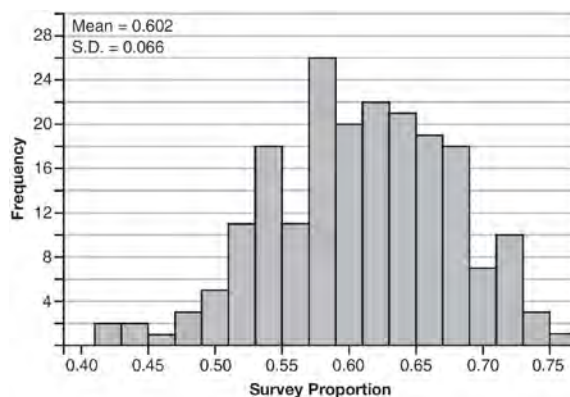
183 The guidance department has reported that of the senior class, 2.3% are members of key club, K , 8.6% are enrolled in AP Physics, P , and 1.9% are in both. Determine the probability of P given K , to the *nearest tenth of a percent*. The principal would like a basic interpretation of these results. Write a statement relating your calculated probabilities to student enrollment in the given situation.

184 Solve the system of equations shown below algebraically.

$$(x - 3)^2 + (y + 2)^2 = 16$$

$$2x + 2y = 10$$

185 Fifty-five students attending the prom were randomly selected to participate in a survey about the music choice at the prom. Sixty percent responded that a DJ would be preferred over a band. Members of the prom committee thought that the vote would have 50% for the DJ and 50% for the band. A simulation was run 200 times, each of sample size 55, based on the premise that 60% of the students would prefer a DJ. The approximate normal simulation results are shown below.



Using the results of the simulation, determine a plausible interval containing the middle 95% of the data. Round all values to the *nearest hundredth*. Members of the prom committee are concerned that a vote of all students attending the prom may produce a 50% – 50% split. Explain what statistical evidence supports this concern.

186 Write an explicit formula for a_n , the n th term of the recursively defined sequence below.

$$a_1 = x + 1$$

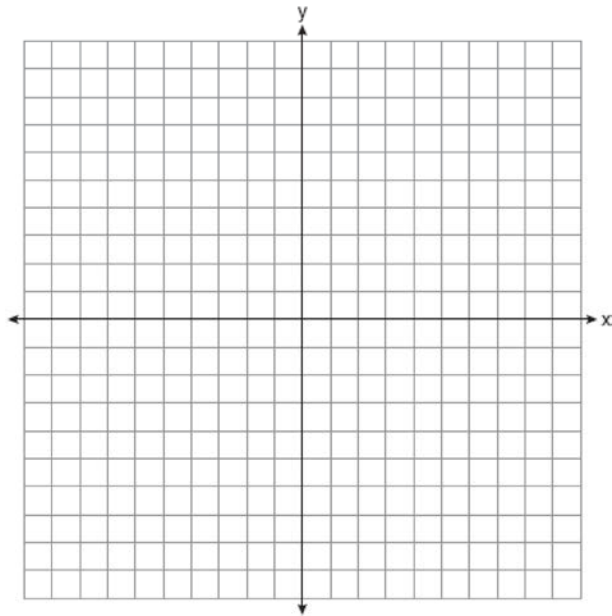
$$a_n = x(a_{n-1})$$

For what values of x would $a_n = 0$ when $n > 1$?

Algebra II CCSS 4 Point Regents Exam Questions

www.jmap.org

- 187 Graph $y = \log_2(x + 3) - 5$ on the set of axes below.
Use an appropriate scale to include *both* intercepts.



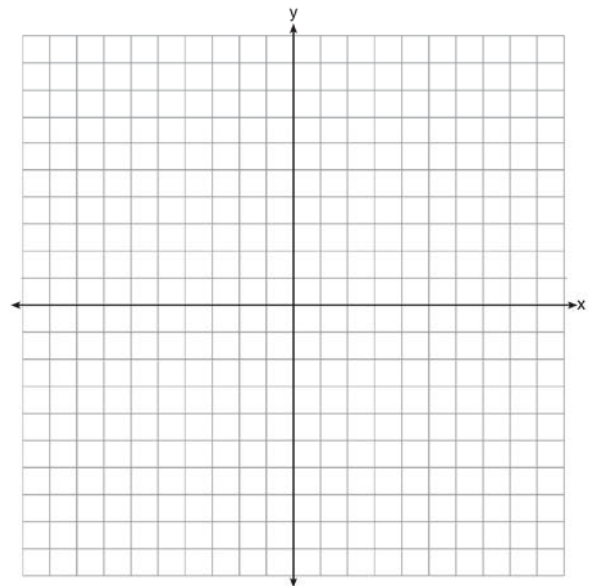
Describe the behavior of the given function as x approaches -3 and as x approaches positive infinity.

- 188 Simon lost his library card and has an overdue library book. When the book was 5 days late, he owed \$2.25 to replace his library card and pay the fine for the overdue book. When the book was 21 days late, he owed \$6.25 to replace his library card and pay the fine for the overdue book. Suppose the total amount Simon owes when the book is n days late can be determined by an arithmetic sequence. Determine a formula for a_n , the n th term of this sequence. Use the formula to determine the amount of money, in dollars, Simon needs to pay when the book is 60 days late.

- 189 Solve for all values of p : $\frac{3p}{p-5} - \frac{2}{p+3} = \frac{p}{p+3}$

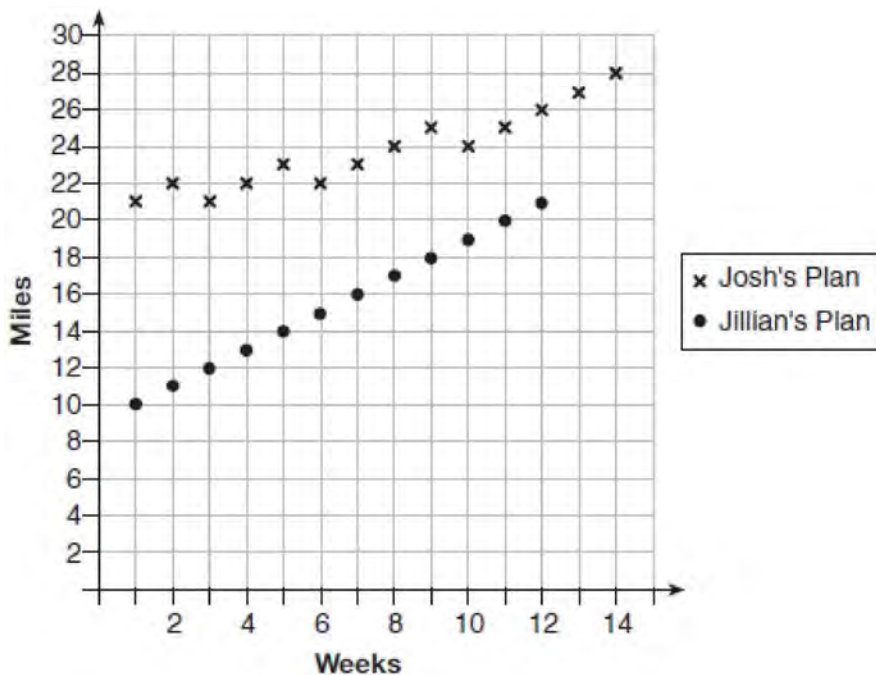
- 190 Algebraically determine the values of h and k to correctly complete the identity stated below.
 $2x^3 - 10x^2 + 11x - 7 = (x - 4)(2x^2 + hx + 3) + k$

- 191 Find algebraically the zeros for $p(x) = x^3 + x^2 - 4x - 4$. On the set of axes below, graph $y = p(x)$.



- 192 Solve the following system of equations algebraically for all values of x , y , and z :
- $$\begin{aligned} x + 3y + 5z &= 45 \\ 6x - 3y + 2z &= -10 \\ -2x + 3y + 8z &= 72 \end{aligned}$$

- 193 Elaina has decided to run the Buffalo half-marathon in May. She researched training plans on the Internet and is looking at two possible plans: Jillian's 12-week plan and Josh's 14-week plan. The number of miles run per week for each plan is plotted below.



Which one of the plans follows an arithmetic pattern? Explain how you arrived at your answer. Write a recursive definition to represent the number of miles run each week for the duration of the plan you chose. Jillian's plan has an alternative if Elaina wanted to train instead for a full 26-mile marathon. Week one would start at 13 miles and follow the same pattern for the half-marathon, but it would continue for 14 weeks. Write an explicit formula, in *simplest form*, to represent the number of miles run each week for the full-marathon training plan.

- 194 Alexa earns \$33,000 in her first year of teaching and earns a 4% increase in each successive year. Write a geometric series formula, S_n , for Alexa's total earnings over n years. Use this formula to find Alexa's total earnings for her first 15 years of teaching, to the *nearest cent*.

- 195 Solve the following system of equations algebraically for all values of x , y , and z :

$$x + y + z = 1$$

$$2x + 4y + 6z = 2$$

$$-x + 3y - 5z = 11$$

196 Which function shown below has a greater average rate of change on the interval $[-2,4]$? Justify your answer.

x	$f(x)$
-4	0.3125
-3	0.625
-2	1.25
-1	2.5
0	5
1	10
2	20
3	40
4	80
5	160
6	320

$$g(x) = 4x^3 - 5x^2 + 3$$

197 Jim is looking to buy a vacation home for \$172,600 near his favorite southern beach. The formula to compute a mortgage payment, M , is

$$M = P \cdot \frac{r(1+r)^N}{(1+r)^N - 1}$$

where P is the principal

amount of the loan, r is the monthly interest rate, and N is the number of monthly payments. Jim's bank offers a monthly interest rate of 0.305% for a 15-year mortgage. With no down payment, determine Jim's mortgage payment, rounded to the nearest dollar. Algebraically determine and state the down payment, rounded to the nearest dollar, that Jim needs to make in order for his mortgage payment to be \$1100.

198 Monthly mortgage payments can be found using the formula below:

$$M = \frac{P \left(\frac{r}{12} \right) \left(1 + \frac{r}{12} \right)^n}{\left(1 + \frac{r}{12} \right)^n - 1}$$

M = monthly payment

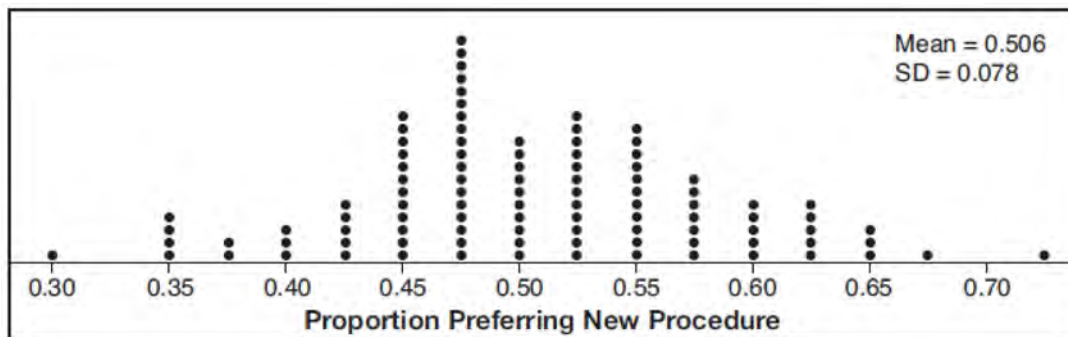
P = amount borrowed

r = annual interest rate

n = number of monthly payments

The Banks family would like to borrow \$120,000 to purchase a home. They qualified for an annual interest rate of 4.8%. Algebraically determine the fewest number of whole years the Banks family would need to include in the mortgage agreement in order to have a monthly payment of no more than \$720.

- 199 Charlie's Automotive Dealership is considering implementing a new check-in procedure for customers who are bringing their vehicles for routine maintenance. The dealership will launch the procedure if 50% or more of the customers give the new procedure a favorable rating when compared to the current procedure. The dealership devises a simulation based on the minimal requirement that 50% of the customers prefer the new procedure. Each dot on the graph below represents the proportion of the customers who preferred the new check-in procedure, each of sample size 40, simulated 100 times.



Assume the set of data is approximately normal and the dealership wants to be 95% confident of its results. Determine an interval containing the plausible sample values for which the dealership will launch the new procedure. Round your answer to the *nearest hundredth*. Forty customers are selected randomly to undergo the new check-in procedure and the proportion of customers who prefer the new procedure is 32.5%. The dealership decides *not* to implement the new check-in procedure based on the results of the study. Use statistical evidence to explain this decision.

- 200 Two versions of a standardized test are given, an April version and a May version. The statistics for the April version show a mean score of 480 and a standard deviation of 24. The statistics for the May version show a mean score of 510 and a standard deviation of 20. Assume the scores are normally distributed. Joanne took the April version and scored in the interval 510-540. What is the probability, to the *nearest ten thousandth*, that a test paper selected at random from the April version scored in the same interval? Maria took the May version. In what interval must Maria score to claim she scored as well as Joanne?
- 201 Using the formula below, determine the monthly payment on a 5-year car loan with a monthly percentage rate of 0.625% for a car with an original cost of \$21,000 and a \$1000 down payment, to the *nearest cent*.
- $$P_n = PMT \left(\frac{1 - (1 + i)^{-n}}{i} \right)$$
- P_n = present amount borrowed
 n = number of monthly pay periods
 PMT = monthly payment
 i = interest rate per month
- The affordable monthly payment is \$300 for the same time period. Determine an appropriate down payment, to the *nearest dollar*.

- 202 After sitting out of the refrigerator for a while, a turkey at room temperature (68°F) is placed into an oven at 8 a.m., when the oven temperature is 325°F . Newton's Law of Heating explains that the temperature of the turkey will increase proportionally to the difference between the temperature of the turkey and the temperature of the oven, as given by the formula below:

$$T = T_a + (T_0 - T_a)e^{-kt}$$

T_a = the temperature surrounding the object

T_0 = the initial temperature of the object

t = the time in hours

T = the temperature of the object after t hours

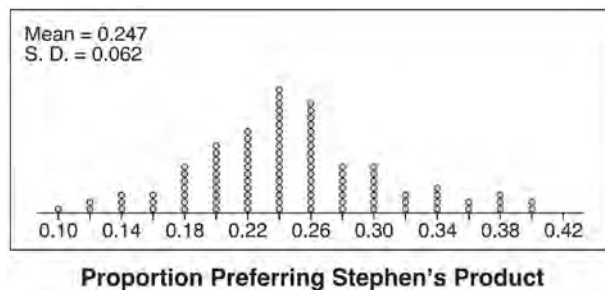
k = decay constant

The turkey reaches the temperature of approximately 100°F after 2 hours. Find the value of k , to the *nearest thousandth*, and write an equation to determine the temperature of the turkey after t hours. Determine the Fahrenheit temperature of the turkey, to the *nearest degree*, at 3 p.m.

- 203 Solve the equation $\sqrt{2x - 7} + x = 5$ algebraically, and justify the solution set.

- 204 Given $z(x) = 6x^3 + bx^2 - 52x + 15$, $z(2) = 35$, and $z(-5) = 0$, algebraically determine all the zeros of $z(x)$.

- 205 Stephen's Beverage Company is considering whether to produce a new brand of cola. The company will launch the product if at least 25% of cola drinkers will buy the product. Fifty cola drinkers are randomly selected to take a blind taste-test of products A , B , and the new product. Nine out of fifty participants preferred Stephen's new cola to products A and B . The company then devised a simulation based on the requirement that 25% of cola drinkers will buy the product. Each dot in the graph shown below represents the proportion of people who preferred Stephen's new product, each of sample size 50, simulated 100 times.



Assume the set of data is approximately normal and the company wants to be 95% confident of its results. Does the sample proportion obtained from the blind taste-test, nine out of fifty, fall within the margin of error developed from the simulation? Justify your answer. The company decides to continue developing the product even though only nine out of fifty participants preferred its brand of cola in the taste-test. Describe how the simulation data could be used to support this decision.

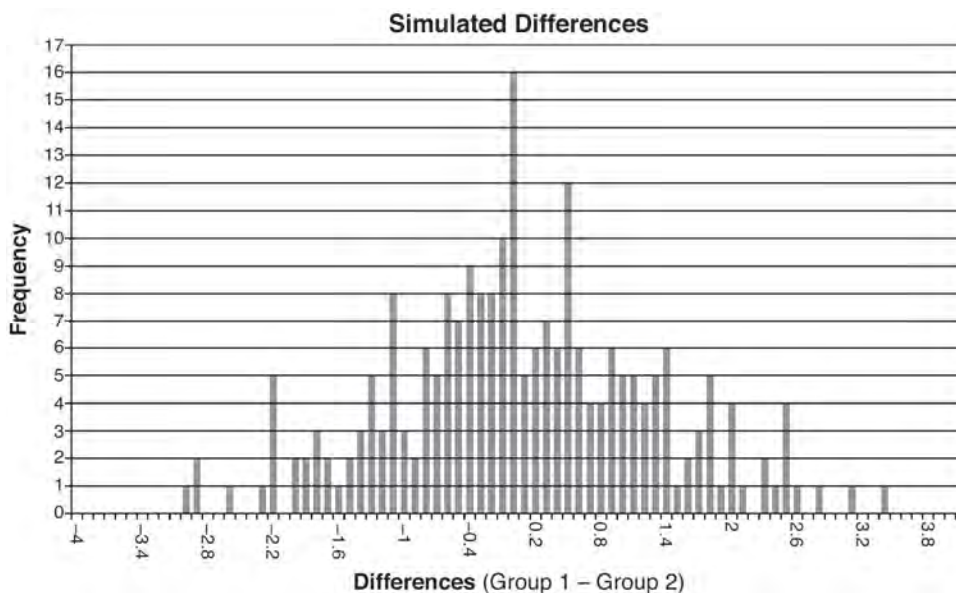
Algebra II CCSS 4 Point Regents Exam Questions

www.jmap.org

- 206 Ayva designed an experiment to determine the effect of a new energy drink on a group of 20 volunteer students. Ten students were randomly selected to form group 1 while the remaining 10 made up group 2. Each student in group 1 drank one energy drink, and each student in group 2 drank one cola drink. Ten minutes later, their times were recorded for reading the same paragraph of a novel. The results of the experiment are shown below.

Group 1 (seconds)	Group 2 (seconds)
17.4	23.3
18.1	18.8
18.2	22.1
19.6	12.7
18.6	16.9
16.2	24.4
16.1	21.2
15.3	21.2
17.8	16.3
19.7	14.5
Mean = 17.7	Mean = 19.1

Ayva thinks drinking energy drinks makes students read faster. Using information from the experimental design or the results, explain why Ayva’s hypothesis may be *incorrect*. Using the given results, Ayva randomly mixes the 20 reading times, splits them into two groups of 10, and simulates the difference of the means 232 times.



Ayva has decided that the difference in mean reading times is not an unusual occurrence. Support her decision using the results of the simulation. Explain your reasoning.

Algebra II CCSS 4 Point Regents Exam Questions

www.jmap.org

- 207 Using a microscope, a researcher observed and recorded the number of bacteria spores on a large sample of uniformly sized pieces of meat kept at room temperature. A summary of the data she recorded is shown in the table below.

Hours (x)	Average Number of Spores (y)
0	4
0.5	10
1	15
2	60
3	260
4	1130
6	16,380

Using these data, write an exponential regression equation, rounding all values to the *nearest thousandth*. The researcher knows that people are likely to suffer from food-borne illness if the number of spores exceeds 100. Using the exponential regression equation, determine the maximum amount of time, to the *nearest quarter hour*, that the meat can be kept at room temperature safely.

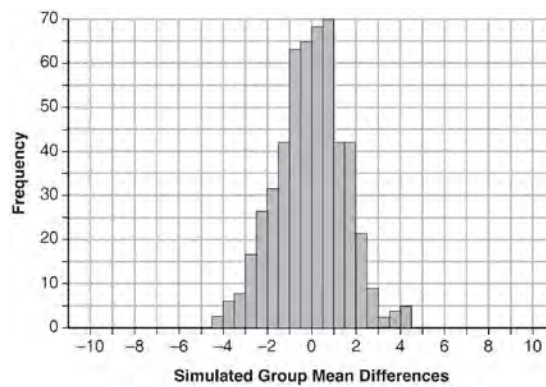
Algebra II CCSS 4 Point Regents Exam Questions

www.jmap.org

208 Seventy-two students are randomly divided into two equally-sized study groups. Each member of the first group (group 1) is to meet with a tutor after school twice each week for one hour. The second group (group 2), is given an online subscription to a tutorial account that they can access for a maximum of two hours each week. Students in both groups are given the same tests during the year. A summary of the two groups' final grades is shown below:

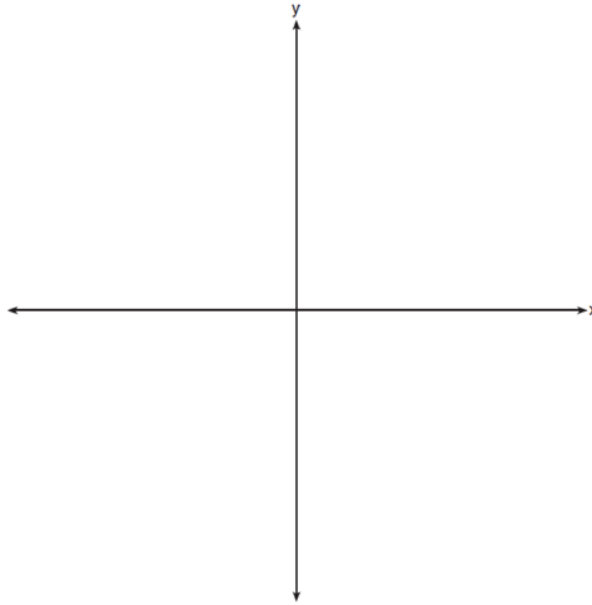
	Group 1	Group 2
\bar{x}	80.16	83.8
S_x	6.9	5.2

Calculate the mean difference in the final grades (group 1 – group 2) and explain its meaning in the context of the problem. A simulation was conducted in which the students' final grades were rerandomized 500 times. The results are shown below.



Use the simulation to determine if there is a significant difference in the final grades. Explain your answer.

- 209 a) On the axes below, sketch *at least one* cycle of a sine curve with an amplitude of 2, a midline at $y = -\frac{3}{2}$, and a period of 2π .



- b) Explain any differences between a sketch of $y = 2 \sin\left(x - \frac{\pi}{3}\right) - \frac{3}{2}$ and the sketch from part a.

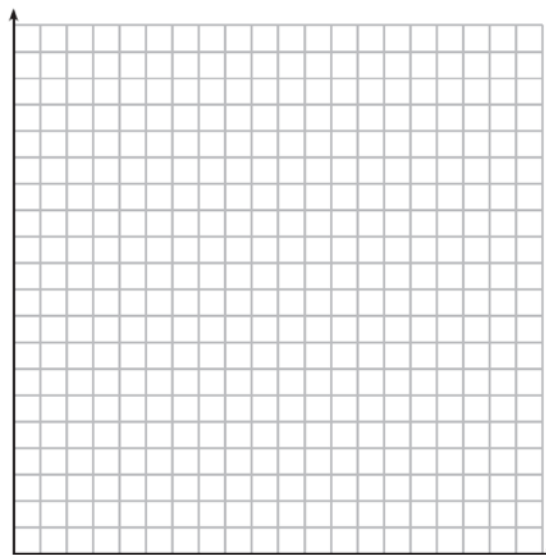
Algebra II Common Core State Standards 6 Point Regents Exam Questions

210 The speed of a tidal wave, s , in hundreds of miles per hour, can be modeled by the equation $s = \sqrt{t} - 2t + 6$, where t represents the time from its origin in hours. Algebraically determine the time when $s = 0$. How much faster was the tidal wave traveling after 1 hour than 3 hours, to the nearest mile per hour? Justify your answer.

211 Titanium-44 is a radioactive isotope such that every 63 years, its mass decreases by half. For a sample of titanium-44 with an initial mass of 100 grams, write a function that will give the mass of the sample remaining after any amount of time. Define all variables. Scientists sometimes use the average yearly decrease in mass for estimation purposes. Use the average yearly decrease in mass of the sample between year 0 and year 10 to predict the amount of the sample remaining after 40 years. Round your answer to the nearest tenth. Is the actual mass of the sample or the estimated mass greater after 40 years? Justify your answer.

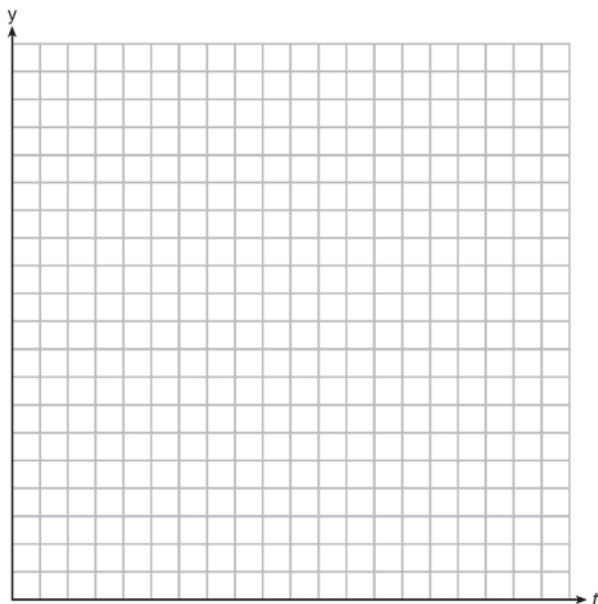
212 Seth's parents gave him \$5000 to invest for his 16th birthday. He is considering two investment options. Option A will pay him 4.5% interest compounded annually. Option B will pay him 4.6% compounded quarterly. Write a function of option A and option B that calculates the value of each account after n years. Seth plans to use the money after he graduates from college in 6 years. Determine how much more money option B will earn than option A to the nearest cent. Algebraically determine, to the nearest tenth of a year, how long it would take for option B to double Seth's initial investment.

213 The value of a certain small passenger car based on its use in years is modeled by $V(t) = 28482.698(0.684)^t$, where $V(t)$ is the value in dollars and t is the time in years. Zach had to take out a loan to purchase the small passenger car. The function $Z(t) = 22151.327(0.778)^t$, where $Z(t)$ is measured in dollars, and t is the time in years, models the unpaid amount of Zach's loan over time. Graph $V(t)$ and $Z(t)$ over the interval $0 \leq t \leq 5$, on the set of axes below.



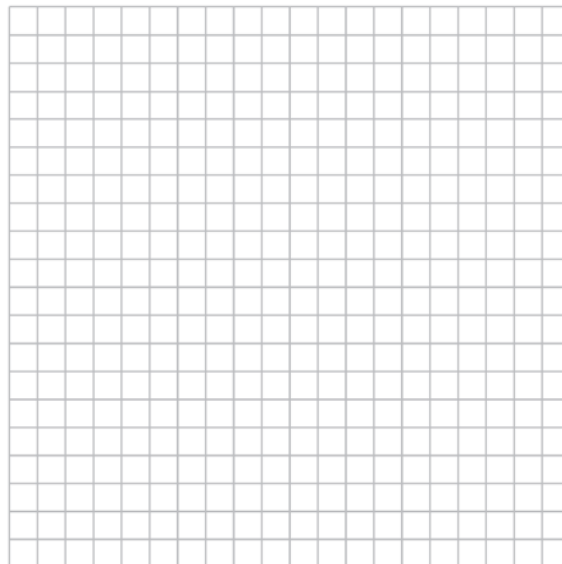
State when $V(t) = Z(t)$, to the nearest hundredth, and interpret its meaning in the context of the problem. Zach takes out an insurance policy that requires him to pay a \$3000 deductible in case of a collision. Zach will cancel the collision policy when the value of his car equals his deductible. To the nearest year, how long will it take Zach to cancel this policy? Justify your answer.

- 214 Drugs break down in the human body at different rates and therefore must be prescribed by doctors carefully to prevent complications, such as overdosing. The breakdown of a drug is represented by the function $N(t) = N_0(e)^{-rt}$, where $N(t)$ is the amount left in the body, N_0 is the initial dosage, r is the decay rate, and t is time in hours. Patient A, $A(t)$, is given 800 milligrams of a drug with a decay rate of 0.347. Patient B, $B(t)$, is given 400 milligrams of another drug with a decay rate of 0.231. Write two functions, $A(t)$ and $B(t)$, to represent the breakdown of the respective drug given to each patient. Graph each function on the set of axes below.



To the *nearest hour*, t , when does the amount of the given drug remaining in patient B begin to exceed the amount of the given drug remaining in patient A? The doctor will allow patient A to take another 800 milligram dose of the drug once only 15% of the original dose is left in the body. Determine, to the *nearest tenth of an hour*, how long patient A will have to wait to take another 800 milligram dose of the drug.

- 215 The ocean tides near Carter Beach follow a repeating pattern over time, with the amount of time between each low and high tide remaining relatively constant. On a certain day, low tide occurred at 8:30 a.m. and high tide occurred at 3:00 p.m. At high tide, the water level was 12 inches above the average local sea level; at low tide it was 12 inches below the average local sea level. Assume that high tide and low tide are the maximum and minimum water levels each day, respectively. Write a cosine function of the form $f(t) = A \cos(Bt)$, where A and B are real numbers, that models the water level, $f(t)$, in inches above or below the average Carter Beach sea level, as a function of the time measured in t hours since 8:30 a.m. On the grid below, graph one cycle of this function.



People who fish in Carter Beach know that a certain species of fish is most plentiful when the water level is increasing. Explain whether you would recommend fishing for this species at 7:30 p.m. or 10:30 p.m. using evidence from the given context.

Algebra II CCSS 6 Point Regents Exam Questions

www.jmap.org

- 216 A radioactive substance has a mass of 140 g at 3 p.m. and 100 g at 8 p.m. Write an equation in the

form $A = A_0 \left(\frac{1}{2} \right)^{\frac{t}{h}}$ that models this situation,

where h is the constant representing the number of hours in the half-life, A_0 is the initial mass, and A is the mass t hours after 3 p.m. Using this equation, solve for h , to the *nearest ten thousandth*. Determine when the mass of the radioactive substance will be 40 g. Round your answer to the *nearest tenth of an hour*.

Algebra II Common Core State Standards Multiple Choice Regents Exam Questions Answer Section

1 ANS: 1

II. Ninth graders drive to school less often; III. Students know little about adults; IV. Calculus students love math!

REF: 081602aai NAT: S.IC.B.3 TOP: Analysis of Data

KEY: bias

2 ANS: 4 REF: 081622aai NAT: F.BF.A.1 TOP: Modeling Exponential Functions

KEY: AII

3 ANS: 3 REF: 061607aai NAT: S.IC.A.2 TOP: Analysis of Data

4 ANS: 4

$$m^5 + m^3 - 6m = m(m^4 + m^2 - 6) = m(m^2 + 3)(m^2 - 2)$$

REF: 011703aai NAT: A.SSE.A.2 TOP: Factoring Polynomials

KEY: higher power AII

5 ANS: 3

$$x^2 + 2x + 1 = -5 + 1$$

$$(x + 1)^2 = -4$$

$$x + 1 = \pm 2i$$

$$x = -1 \pm 2i$$

REF: 081703aai NAT: A.REI.B.4 TOP: Solving Quadratics

KEY: complex solutions | completing the square

6 ANS: 2

Combining (1) and (3): $-6c = -18$ Combining (1) and (2): $5a + 3c = -1$ Using (3): $-(-2) - 5b - 5(3) = 2$

$$c = 3$$

$$5a + 3(3) = -1$$

$$2 - 5b - 15 = 2$$

$$5a = -10$$

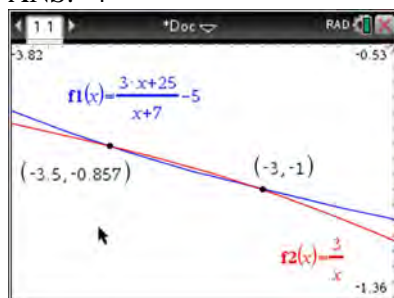
$$b = -3$$

$$a = -2$$

REF: 081623aai NAT: A.REI.C.6 TOP: Solving Linear Systems

KEY: three variables

7 ANS: 4



$$x(x+7) \left[\frac{3x+25}{x+7} - 5 = \frac{3}{x} \right]$$

$$x(3x+25) - 5x(x+7) = 3(x+7)$$

$$3x^2 + 25x - 5x^2 - 35x = 3x + 21$$

$$2x^2 + 13x + 21 = 0$$

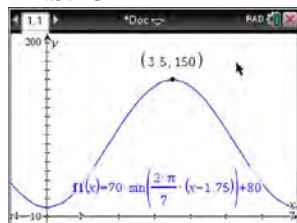
$$(2x+7)(x+3) = 0$$

$$x = -\frac{7}{2}, -3$$

REF: fall1501aii NAT: A.REI.A.2 TOP: Solving Rationals

KEY: rational solutions

8 ANS: 3



$H(t)$ is at a minimum at $70(-1) + 80 = 10$

REF: 061613aii NAT: F.IF.B.4 TOP: Graphing Trigonometric Functions

KEY: maximum/minimum

9 ANS: 2

$$ME = \left(z \sqrt{\frac{p(1-p)}{n}} \right) = \left(1.96 \sqrt{\frac{(0.55)(0.45)}{900}} \right) \approx 0.03$$

REF: 081612aii NAT: S.IC.B.4 TOP: Analysis of Data

10 ANS: 2 REF: 011720aii NAT: A.APR.B.2 TOP: Remainder Theorem

11 ANS: 1 REF: 011704aii NAT: F.TF.C.8 TOP: Simplifying Trigonometric Expressions

12 ANS: 3

$$0.75^{\frac{1}{10}} \approx .9716$$

REF: 061713aii NAT: A.SSE.B.3 TOP: Modeling Exponential Functions

KEY: All

13 ANS: 1

$$\begin{array}{r|rrrrr} 2 & 1 & 0 & -4 & -4 & 8 \\ & & 2 & 4 & 0 & -8 \\ \hline & 1 & 2 & 0 & -4 & 0 \end{array}$$

Since there is no remainder when the quartic is divided by $x - 2$, this binomial is a factor.

REF: 061711aii NAT: A.APR.B.2 TOP: Remainder Theorem

14 ANS: 4

$$496 \pm 2(115)$$

REF: 011718aii NAT: S.ID.A.4 TOP: Normal Distributions

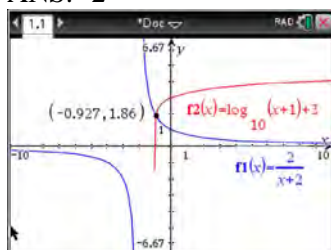
KEY: interval

15 ANS: 1

The graph of $y = \sin x$ is unchanged when rotated 180° about the origin.

REF: 081614aii NAT: F.BF.B.3 TOP: Even and Odd Functions

16 ANS: 2



REF: 011712aii NAT: A.REI.D.11 TOP: Other Systems

KEY: All

17 ANS: 3

$$(m - 2)^2(m + 3) = (m^2 - 4m + 4)(m + 3) = m^3 + 3m^2 - 4m^2 - 12m + 4m + 12 = m^3 - m^2 - 8m + 12$$

REF: 081605aii NAT: A.SSE.A.2 TOP: Factoring Polynomials

KEY: factoring by grouping

18 ANS: 3

$$(3k - 2i)^2 = 9k^2 - 12ki + 4i^2 = 9k^2 - 12ki - 4$$

REF: 081702aii NAT: N.CN.A.2 TOP: Operations with Complex Numbers

19 ANS: 4

	Bar Harbor	Phoenix
Minimum	31.386	66.491
Midline	55.3	86.729
Maximum	79.214	106.967
Range	47.828	40.476

REF: 061715aii NAT: F.IF.B.4 TOP: Graphing Trigonometric Functions

KEY: maximum/minimum

20 ANS: 3

REF: 061623aii NAT: F.BF.A.2 TOP: Sequences

21 ANS: 4

If $1 - i$ is one solution, the other is $1 + i$. $(x - (1 - i))(x - (1 + i)) = 0$

$$x^2 - x - ix - x + ix + (1 - i^2) = 0$$

$$x^2 - 2x + 2 = 0$$

REF: 081601aai NAT: A.REI.B.4 TOP: Complex Conjugate Root Theorem

22 ANS: 3

$$2d(d^3 + 3d^2 - 9d - 27)$$

$$2d(d^2(d + 3) - 9(d + 3))$$

$$2d(d^2 - 9)(d + 3)$$

$$2d(d + 3)(d - 3)(d + 3)$$

$$2d(d + 3)^2(d - 3)$$

REF: 081615aai NAT: A.SSE.A.2 TOP: Factoring Polynomials

KEY: factoring by grouping

23 ANS: 4

$$\frac{-3x^2 - 5x + 2}{x^3 + 2x^2} = \frac{(-3x + 1)(x + 2)}{x^2(x + 2)} = \frac{-3x}{x^2} + \frac{1}{x^2} = -3x^{-1} + x^{-2}$$

REF: 061723aai NAT: A.APR.D.6 TOP: Expressions with Negative Exponents

KEY: variables

24 ANS: 4

REF: 061716aai NAT: N.RN.A.2 TOP: Radicals and Rational Exponents

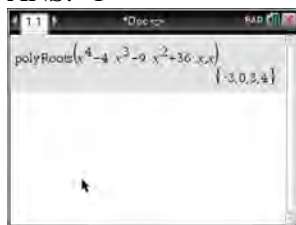
KEY: variables

25 ANS: 1

$$\begin{array}{r} \overline{) 6x^3 + 17x^2 + 10x + 2} \\ \underline{6x^3 + 9x^2} \\ 8x^2 + 10x \\ \underline{8x^2 + 12x} \\ -2x + 2 \\ \underline{-2x - 3} \\ 5 \end{array}$$

REF: fall1503aai NAT: A.APR.D.6 TOP: Rational Expressions

26 ANS: 1



$$x^4 - 4x^3 - 9x^2 + 36x = 0$$

$$x^3(x - 4) - 9x(x - 4) = 0$$

$$(x^3 - 9x)(x - 4) = 0$$

$$x(x^2 - 9)(x - 4) = 0$$

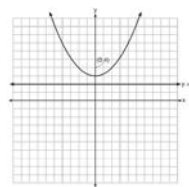
$$x(x + 3)(x - 3)(x - 4) = 0$$

$$x = 0, \pm 3, 4$$

REF: 061606aai NAT: A.APR.B.3 TOP: Zeros of Polynomials

KEY: AII

27 ANS: 4



A parabola with a focus of $(0, 4)$ and a directrix of $y = 2$ is sketched as follows: By inspection, it is determined that the vertex of the parabola is $(0, 3)$. It is also evident that the distance, p , between the vertex and the focus is 1. It is possible to use the formula $(x - h)^2 = 4p(y - k)$ to derive the equation of the parabola as follows: $(x - 0)^2 = 4(1)(y - 3)$

$$x^2 = 4y - 12$$

$$x^2 + 12 = 4y$$

$$\frac{x^2}{4} + 3 = y$$

or A point (x, y) on the parabola must be the same distance from the focus as it is from the directrix. For any such point (x, y) , the distance to the focus is $\sqrt{(x - 0)^2 + (y - 4)^2}$ and the distance to the directrix is $y - 2$. Setting this equal leads to: $x^2 + y^2 - 8y + 16 = y^2 - 4y + 4$

$$x^2 + 16 = 4y + 4$$

$$\frac{x^2}{4} + 3 = y$$

REF: spr1502aai NAT: G.GPE.A.2 TOP: Graphing Quadratic Functions

28 ANS: 2 REF: 081610aai NAT: F.IF.B.4 TOP: Graphing Trigonometric Functions

KEY: increasing/decreasing

29 ANS: 1

$$\frac{157}{25 + 47 + 157}$$

REF: 081607aia NAT: S.CP.A.4 TOP: Conditional Probability

30 ANS: 3



REF: 081604aia NAT: S.ID.A.4 TOP: Normal Distributions

KEY: probability

31 ANS: 2

$$\begin{array}{r} 2x^2 - 3x + 7 \\ 2x + 3 \overline{) 4x^3 + 0x^2 + 5x + 10} \\ \underline{4x^3 + 6x^2} \\ -6x^2 + 5x \\ \underline{-6x^2 - 9x} \\ 14x + 10 \\ \underline{14x + 21} \\ -11 \end{array}$$

REF: 061614aia NAT: A.APR.D.6 TOP: Rational Expressions

32 ANS: 1

$$P(28) = 5(2)^{\frac{98}{28}} \approx 56$$

REF: 011702aia NAT: F.LE.A.2 TOP: Modeling Exponential Functions

KEY: AII

33 ANS: 2

$$\begin{array}{r|rrrr} -4 & 1 & -11 & 16 & 84 \\ & & -4 & 60 & -304 \\ \hline & 1 & -15 & 76 & \end{array}$$

Since there is a remainder when the cubic is divided by $x + 4$, this binomial is not a factor.

REF: 081720aia NAT: A.APR.B.2 TOP: Remainder Theorem

34 ANS: 4

$$4(x^2 - 6x + 9) + 4(y^2 + 18y + 81) = 76 + 36 + 324$$

$$4(x - 3)^2 + 4(y + 9)^2 = 436$$

REF: 061619aai NAT: G.GPE.A.1 TOP: Equations of Circles

KEY: completing the square

35 ANS: 1

REF: 081722aai

NAT: S.IC.B.6

TOP: Analysis of Data

36 ANS: 2

$$6xi^3(-4xi + 5) = -24x^2i^4 + 30xi^3 = -24x^2(1) + 30x(-1) = -24x^2 - 30xi$$

REF: 061704aai NAT: N.CN.A.2 TOP: Operations with Complex Numbers

37 ANS: 3

REF: 061602aai

NAT: A.CED.A.1

TOP: Modeling Rationals

38 ANS: 1

$$\frac{2(x-4)}{(x+3)(x-4)} + \frac{3(x+3)}{(x-4)(x+3)} = \frac{2x-2}{x^2-x-12}$$

$$2x - 8 + 3x + 9 = 2x - 2$$

$$3x = -3$$

$$x = -1$$

REF: 011717aai NAT: A.REI.A.2 TOP: Solving Rationals

KEY: rational solutions

39 ANS: 3

REF: 061720aai

NAT: F.LE.A.2

TOP: Sequences

KEY: AII

40 ANS: 3

$$\left(\frac{1}{2}\right)^{\frac{1}{73.83}} \approx 0.990656$$

REF: 081710aai NAT: A.SSE.B.3 TOP: Modeling Exponential Functions

KEY: AII

41 ANS: 3

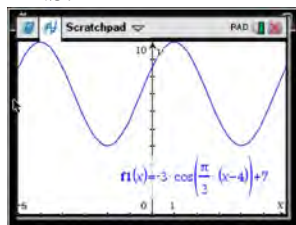
REF: 011708aai

NAT: F.BF.B.4

TOP: Inverse of Functions

KEY: equations

42 ANS: 4



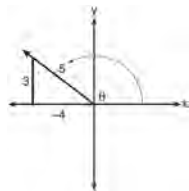
As the range is $[4, 10]$, the midline is $y = \frac{4+10}{2} = 7$.

REF: fall1506aai NAT: F.IF.C.7 TOP: Graphing Trigonometric Functions

KEY: mixed

43 ANS: 1

A reference triangle can be sketched using the coordinates $(-4, 3)$ in the second quadrant to find the value of $\sin \theta$.



REF: spr1503aii NAT: F.TF.A.2 TOP: Determining Trigonometric Functions

KEY: extension to reals

44 ANS: 3

REF: 011710aii

NAT: F.BF.A.1

TOP: Operations with Functions

45 ANS: 3

$$d = 10 \log \frac{6.3 \times 10^{-3}}{1.0 \times 10^{-12}} \approx 98$$

REF: 011715aii

NAT: F.IF.B.4

TOP: Evaluating Logarithmic Expressions

46 ANS: 4

$$y = g(x) = (x-2)^2 \quad (x-2)^2 = 3x-2 \quad y = 3(6)-2 = 16$$

$$x^2 - 4x + 4 = 3x - 2 \quad y = 3(1) - 2 = 1$$

$$x^2 - 7x + 6 = 0$$

$$(x-6)(x-1) = 0$$

$$x = 6, 1$$

REF: 011705aii

NAT: A.REI.C.7

TOP: Quadratic-Linear Systems

KEY: All

47 ANS: 2

$$\begin{array}{r} x^2 + 0x + 1 \\ x+2 \overline{) x^3 + 2x^2 + x + 6} \end{array}$$

$$\underline{x^3 + 2x^2}$$

$$0x^2 + x$$

$$\underline{0x^2 + 0x}$$

$$x + 6$$

$$\underline{x + 2}$$

$$4$$

REF: 081611aii

NAT: A.APR.D.6

TOP: Rational Expressions

48 ANS: 3

REF: 081618aii

NAT: F.LE.A.2

TOP: Sequences

49 ANS: 1

The zeros of the polynomial are at $-b$, and c . The sketch of a polynomial of degree 3 with a negative leading coefficient should have end behavior showing as x goes to negative infinity, $f(x)$ goes to positive infinity. The multiplicities of the roots are correctly represented in the graph.

REF: spr1501aii NAT: A.APR.B.3 TOP: Zeros of Polynomials

KEY: All

50 ANS: 3

Self selection causes bias.

REF: 061703aii NAT: S.IC.B.3 TOP: Analysis of Data

KEY: bias

51 ANS: 3

(3) repeats 3 times over 2π .

REF: 011722aii NAT: F.IF.C.7 TOP: Graphing Trigonometric Functions

KEY: recognize

52 ANS: 2

REF: 061620aii NAT: F.IF.B.4 TOP: Graphing Polynomial Functions

53 ANS: 2

$$x = \frac{y+1}{y-2}$$

$$xy - 2x = y + 1$$

$$xy - y = 2x + 1$$

$$y(x-1) = 2x + 1$$

$$y = \frac{2x+1}{x-1}$$

REF: 081714aii NAT: F.BF.B.4 TOP: Inverse of Functions

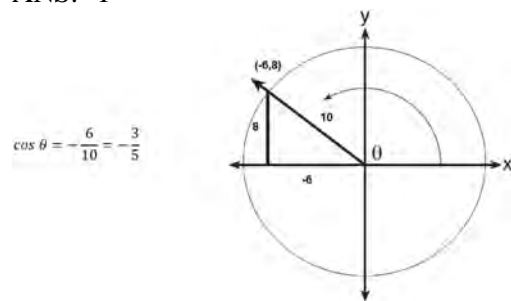
KEY: equations

54 ANS: 3

The pattern suggests an exponential pattern, not linear or sinusoidal. A 4% growth rate is accurate, while a 43% growth rate is not.

REF: 011713aii NAT: S.ID.B.6 TOP: Regression KEY: choose model

55 ANS: 1



REF: 061617aii NAT: F.TF.A.2 TOP: Determining Trigonometric Functions

KEY: extension to reals

56 ANS: 3

$$\frac{1}{J} = \frac{1}{F} - \frac{1}{W}$$

$$\frac{1}{J} = \frac{W-F}{FW}$$

$$J = \frac{FW}{W-F}$$

REF: 081617aai NAT: A.REI.A.2 TOP: Solving Rationals

KEY: rational solutions

57 ANS: 1

$$\frac{A}{P} = e^{rt}$$

$$0.42 = e^{rt}$$

$$\ln 0.42 = \ln e^{rt}$$

$$-0.87 \approx rt$$

REF: 011723aai NAT: F.BF.A.1 TOP: Modeling Exponential Functions

KEY: AII

58 ANS: 4

$$\frac{m(c)}{g(c)} = \frac{c+1}{1-c^2} = \frac{c+1}{(1+c)(1-c)} = \frac{1}{1-c}$$

REF: 061608aai NAT: F.BF.A.1 TOP: Operations with Functions

59 ANS: 4 REF: 081718aai NAT: F.IF.C.7 TOP: Graphing Trigonometric Functions

KEY: amplitude

60 ANS: 2

 $h(x)$ does not have a y -intercept.

REF: 011719aai NAT: F.IF.C.9 TOP: Comparing Functions

61 ANS: 2

$$x = -\frac{3}{4}y + 2$$

$$-4x = 3y - 8$$

$$-4x + 8 = 3y$$

$$-\frac{4}{3}x + \frac{8}{3} = y$$

REF: 061616aai NAT: F.BF.B.4 TOP: Inverse of Functions

KEY: equations

62 ANS: 1



REF: 081711aii NAT: S.ID.A.4 TOP: Normal Distributions
KEY: percent

63 ANS: 1

The car lost approximately 19% of its value each year.

REF: 081613aii NAT: F.LE.B.5 TOP: Modeling Exponential Functions

64 ANS: 2



$\bar{x} + 2\sigma$ represents approximately 48% of the data.

REF: 061609aii NAT: S.ID.A.4 TOP: Normal Distributions
KEY: percent

65 ANS: 1

$$d = 18; r = \pm \frac{5}{4}$$

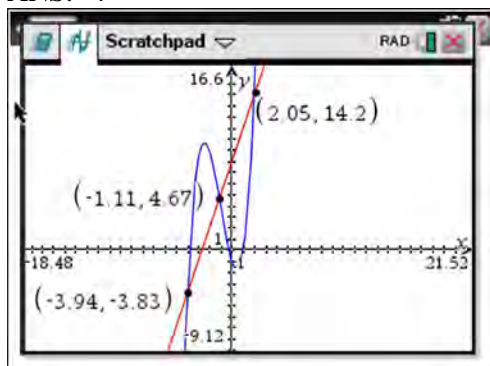
REF: 011714aii NAT: F.IF.A.3 TOP: Sequences KEY: term

66 ANS: 4

The vertex is (1,0) and $p = 2$. $y = \frac{1}{4(2)}(x-1)^2 + 0$

REF: 061717aii NAT: G.GPE.A.2 TOP: Graphing Quadratic Functions

67 ANS: 4



REF: 061622aai NAT: A.REI.D.11 TOP: Other Systems
KEY: AII

68 ANS: 3

The graph shows three real zeros, and has end behavior matching the given end behavior.

REF: 061604aai NAT: A.APR.B.3 TOP: Zeros of Polynomials
KEY: AII

69 ANS: 4

$$4x^2 = -98$$

$$x^2 = -\frac{98}{4}$$

$$x^2 = -\frac{49}{2}$$

$$x = \pm \sqrt{-\frac{49}{2}} = \pm \frac{7i}{\sqrt{2}} \cdot \frac{\sqrt{2}}{\sqrt{2}} = \pm \frac{7i\sqrt{2}}{2}$$

REF: 061707aai NAT: A.REI.B.4 TOP: Solving Quadratics
KEY: complex solutions | taking square roots

70 ANS: 4

The scenario represents a decreasing geometric sequence with a common ratio of 0.80.

REF: 061610aai NAT: F.BF.A.2 TOP: Sequences

71 ANS: 3

$$\log_{0.8} \left(\frac{V}{1700} \right) = t \quad \frac{17,000(0.8)^3 - 17,000(0.8)^1}{3 - 1} \approx -2450$$

$$0.8^t = \frac{V}{17000}$$

$$V = 17000(0.8)^t$$

REF: 081709aai NAT: F.IF.B.6 TOP: Rate of Change
KEY: AII

72 ANS: 3

$f(x) = -f(x)$, so $f(x)$ is odd. $g(-x) \neq g(x)$, so $g(x)$ is not even. $g(-x) \neq -g(x)$, so $g(x)$ is not odd. $h(-x) = h(x)$, so $h(x)$ is even.

REF: fall1502aii NAT: F.BF.B.3 TOP: Even and Odd Functions

73 ANS: 4

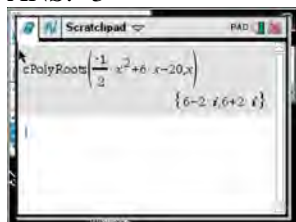
$$\text{period} = \frac{2\pi}{B}$$

$$\frac{1}{60} = \frac{2\pi}{B}$$

$$B = 120\pi$$

REF: 061624aii NAT: F.TF.B.5 TOP: Modeling Trigonometric Functions

74 ANS: 3



$$-2\left(-\frac{1}{2}x^2 = -6x + 20\right)$$

$$x^2 - 12x = -40$$

$$x^2 - 12x + 36 = -40 + 36$$

$$(x - 6)^2 = -4$$

$$x - 6 = \pm 2i$$

$$x = 6 \pm 2i$$

REF: fall1504aii NAT: A.REI.B.4 TOP: Solving Quadratics

KEY: complex solutions | completing the square

75 ANS: 4

$$d = 32(.8)^{b-1} \quad S_n = \frac{32 - 32(.8)^{12}}{1 - .8} \approx 149$$

REF: 081721aii NAT: A.SSE.B.4 TOP: Series

76 ANS: 1

REF: 061701aii NAT: A.APR.B.3 TOP: Zeros of Polynomials

KEY: All

77 ANS: 4

$$(1) \frac{B(60) - B(10)}{60 - 10} \approx 28\% \quad (2) \frac{B(69) - B(19)}{69 - 19} \approx 33\% \quad (3) \frac{B(72) - B(36)}{72 - 36} \approx 38\% \quad (4) \frac{B(73) - B(60)}{73 - 60} \approx 46\%$$

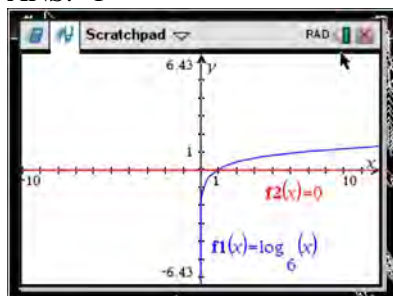
REF: 011721aii NAT: F.IF.B.6 TOP: Rate of Change

KEY: All

78 ANS: 4

REF: 081624aii NAT: F.BF.A.2 TOP: Sequences

79 ANS: 1



REF: 061618aai NAT: F.IF.C.7 TOP: Graphing Logarithmic Functions

80 ANS: 2

$$\left(m^{\frac{5}{3}}\right)^{-\frac{1}{2}} = m^{-\frac{5}{6}} = \frac{1}{\sqrt[6]{m^5}}$$

REF: 011707aai NAT: N.RN.A.2 TOP: Radicals and Rational Exponents
KEY: variables

81 ANS: 2

REF: 081603aai NAT: A.REI.D.11 TOP: Other Systems
KEY: All

82 ANS: 1

The probability of rain equals the probability of rain, given that Sean pitches.

REF: 061611aai NAT: S.CP.A.3 TOP: Conditional Probability

83 ANS: 3

Since $x + 4$ is a factor of $p(x)$, there is no remainder.

REF: 081621aai NAT: A.APR.B.2 TOP: Remainder Theorem

84 ANS: 4

$$\left(\frac{-54x^9}{y^4}\right)^{\frac{2}{3}} = \frac{(2 \cdot -27)^{\frac{2}{3}} x^{\frac{18}{3}}}{y^{\frac{8}{3}}} = \frac{2^{\frac{2}{3}} \cdot 9x^6}{y^2 \cdot y^{\frac{2}{3}}} = \frac{9x^6 \sqrt[3]{4}}{y^2 \sqrt[3]{y^2}}$$

REF: 081723aai NAT: N.RN.A.2 TOP: Radicals and Rational Exponents
KEY: variables

85 ANS: 1

$$(x+3)^2 + (2x-4)^2 = 8 \quad b^2 - 4ac$$

$$x^2 + 6x + 9 + 4x^2 - 16x + 16 = 8 \quad 100 - 4(5)(17) < 0$$

$$5x^2 - 10x + 17 = 0$$

REF: 081719aai NAT: A.REI.C.7 TOP: Quadratic-Linear Systems

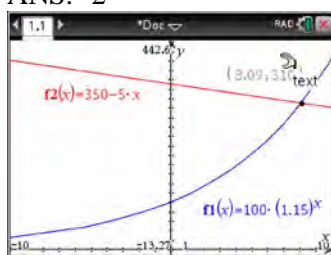
KEY: AII

86 ANS: 2

$$(2-yi)(2-yi) = 4 - 4yi + y^2 i^2 = -y^2 - 4yi + 4$$

REF: 061603aai NAT: N.CN.A.2 TOP: Operations with Complex Numbers

87 ANS: 2



REF: 011716aai NAT: A.REI.D.11 TOP: Other Systems

KEY: AII

88 ANS: 3 REF: 061710aai NAT: S.IC.A.2 TOP: Analysis of Data

89 ANS: 2

$$\sqrt{x+14} = \sqrt{2x+5} + 1 \quad \sqrt{22+14} - \sqrt{2(22)+5} = 1$$

$$x+14 = 2x+5 + 2\sqrt{2x+5} + 1 \quad 6-7 \neq 1$$

$$-x+8 = 2\sqrt{2x+5}$$

$$x^2 - 16x + 64 = 8x + 20$$

$$x^2 - 24x + 44 = 0$$

$$(x-22)(x-2) = 0$$

$$x = 2, 22$$

REF: 081704aai NAT: A.REI.A.2 TOP: Solving Radicals

KEY: advanced

90 ANS: 2 REF: 061724aai NAT: A.SSE.B.4 TOP: Series

91 ANS: 2 REF: 011701aai NAT: F.IF.B.4 TOP: Graphing Trigonometric Functions

92 ANS: 4

$$(x+y)^3 = x^3 + 3x^2y + 3xy^2 + y^3 \neq x^3 + 3xy + y^3$$

REF: 081620aai NAT: A.APR.C.4 TOP: Polynomial Identities

93 ANS: 1

1) let $y = x + 2$, then $y^2 + 2y - 8$

$$(y + 4)(y - 2)$$

$$(x + 2 + 4)(x + 2 - 2)$$

$$(x + 6)x$$

REF: 081715aai NAT: A.SSE.A.2 TOP: Factoring Polynomials

KEY: multivariable

94 ANS: 2

The vertex of the parabola is (0,0). The distance, p , between the vertex and the focus or the vertex and thedirectrix is 1. $y = \frac{-1}{4p}(x - h)^2 + k$

$$y = \frac{-1}{4(1)}(x - 0)^2 + 0$$

$$y = -\frac{1}{4}x^2$$

REF: 081706aai NAT: G.GPE.A.2 TOP: Graphing Quadratic Functions

95 ANS: 1

REF: 081616aai NAT: F.TF.A.1 TOP: Unit Circle

96 ANS: 1

REF: 081609aai NAT: F.BF.B.6 TOP: Sigma Notation

KEY: represent

97 ANS: 3

$$-33t^2 + 360t = 700 + 5t$$

$$-33t^2 + 355t - 700 = 0$$

$$t = \frac{-355 \pm \sqrt{355^2 - 4(-33)(-700)}}{2(-33)} \approx 3, 8$$

REF: 081606aai NAT: A.REI.D.11 TOP: Quadratic-Linear Systems

KEY: All

98 ANS: 4

$$k^4 - 4k^2 + 8k^3 - 32k + 12k^2 - 48$$

$$k^2(k^2 - 4) + 8k(k^2 - 4) + 12(k^2 - 4)$$

$$(k^2 - 4)(k^2 + 8k + 12)$$

$$(k + 2)(k - 2)(k + 6)(k + 2)$$

REF: fall1505aai NAT: A.SSE.A.2 TOP: Factoring Polynomials

KEY: factoring by grouping

99 ANS: 2

$$\cos \theta = \pm \sqrt{1 - \left(\frac{-\sqrt{2}}{5}\right)^2} = \pm \sqrt{\frac{25}{25} - \frac{2}{25}} = \pm \frac{\sqrt{23}}{5}$$

REF: 061712aai NAT: F.TF.C.8 TOP: Determining Trigonometric Functions

100 ANS: 1

(2) is not recursive

REF: 081608aai NAT: F.BF.A.2 TOP: Sequences

101 ANS: 2

The events are independent because $P(A \text{ and } B) = P(A) \cdot P(B)$.

$$0.125 = 0.5 \cdot 0.25$$

If $P(A \text{ or } B) = P(A) + P(B) - P(A \text{ and } B) = 0.25 + 0.5 - .125 = 0.625$, then the events are not mutually exclusive because $P(A \text{ or } B) = P(A) + P(B)$

$$0.625 \neq 0.5 + 0.25$$

REF: 061714aai NAT: S.CP.B.7 TOP: Theoretical Probability

102 ANS: 4

$$x = \frac{8 \pm \sqrt{(-8)^2 - 4(6)(29)}}{2(6)} = \frac{8 \pm \sqrt{-632}}{12} = \frac{8 \pm i\sqrt{4}\sqrt{158}}{12} = \frac{2}{3} \pm \frac{1}{6}i\sqrt{158}$$

REF: 011711aai NAT: A.REI.B.4 TOP: Solving Quadratics

KEY: complex solutions | quadratic formula

103 ANS: 1

$$\begin{array}{r} 2x^2 + x + 5 \\ 2x - 1 \overline{) 4x^3 + 0x^2 + 9x - 5} \\ \underline{4x^3 - 2x^2} \\ 2x^2 + 9x \\ \underline{2x^2 - x} \\ 10x - 5 \\ \underline{10x - 5} \\ 0 \end{array}$$

REF: 081713aai NAT: A.APR.D.6 TOP: Rational Expressions

104 ANS: 2

$$B(t) = 750 \left(1.16^{\frac{1}{12}} \right)^{12t} \approx 750(1.012)^{12t} \quad B(t) = 750 \left(1 + \frac{0.16}{12} \right)^{12t}$$

is wrong, because the growth is an annual rate that is not compounded monthly.

REF: spr1504aii NAT: A.SSE.B.3 TOP: Modeling Exponential Functions
KEY: AII

105 ANS: 3 REF: 061722aii NAT: A.CED.A.1 TOP: Modeling Rationals

106 ANS: 3

$$1.0525^{\frac{1}{12}} \approx 1.00427$$

REF: 061621aii NAT: F.BF.A.1 TOP: Modeling Exponential Functions
KEY: AII

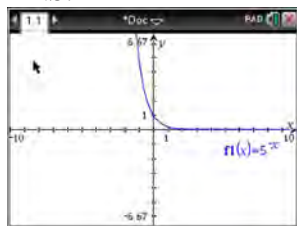
107 ANS: 2

$$\begin{aligned} x(30 - 0.01x) - (0.15x^3 + 0.01x^2 + 2x + 120) &= 30x - 0.01x^2 - 0.15x^3 - 0.01x^2 - 2x - 120 \\ &= -0.15x^3 - 0.02x^2 + 28x - 120 \end{aligned}$$

REF: 061709aii NAT: F.BF.A.1 TOP: Operations with Functions

108 ANS: 4 REF: 081707aii NAT: F.TF.A.2 TOP: Reference Angles

109 ANS: 4



$$y = 5^{-t} = \left(\frac{1}{5} \right)^t$$

REF: 061615aii NAT: F.IF.C.8 TOP: Modeling Exponential Functions

110 ANS: 1

$$x^2 + 2x - 8 = 0$$

$$(x + 4)(x - 2) = 0$$

$$x = -4, 2$$

REF: 081701aii NAT: A.APR.D.6 TOP: Undefined Rationals

111 ANS: 3 REF: 011706aii NAT: S.IC.B.3 TOP: Analysis of Data

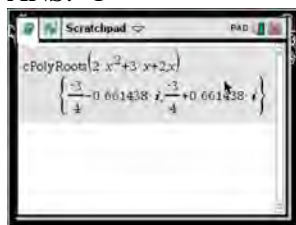
KEY: type

112 ANS: 2

The 2010 population is 110 million.

REF: 061718aii NAT: F.LE.B.5 TOP: Modeling Exponential Functions

113 ANS: 1



$$x = \frac{-3 \pm \sqrt{3^2 - 4(2)(2)}}{2(2)} = \frac{-3 \pm \sqrt{-7}}{4} = -\frac{3}{4} \pm \frac{i\sqrt{7}}{4}$$

REF: 061612aii NAT: A.REI.B.4 TOP: Solving Quadratics

KEY: complex solutions | quadratic formula

114 ANS: 1

$$\frac{2x}{x-2} \left(\frac{x}{x} \right) - \frac{11}{x} \left(\frac{x-2}{x-2} \right) = \frac{8}{x^2 - 2x}$$

$$2x^2 - 11x + 22 = 8$$

$$2x^2 - 11x + 14 = 0$$

$$(2x - 7)(x - 2) = 0$$

$$x = \frac{7}{2}, 2$$

REF: 061719aii NAT: A.REI.A.2 TOP: Solving Rationals

115 ANS: 3 REF: 081724aii NAT: F.BF.A.2 TOP: Sequences

116 ANS: 1

$$(1) \frac{9-0}{2-1} = 9 \quad (2) \frac{17-0}{3.5-1} = 6.8 \quad (3) \frac{0-0}{5-1} = 0 \quad (4) \frac{17--5}{3.5-1} \approx 6.3$$

REF: 011724aii NAT: F.IF.B.6 TOP: Rate of Change

KEY: All

117 ANS: 1

$$8(2^{x+3}) = 48$$

$$2^{x+3} = 6$$

$$(x+3)\ln 2 = \ln 6$$

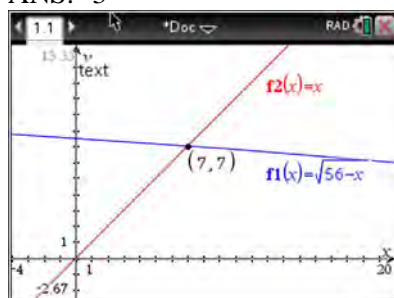
$$x+3 = \frac{\ln 6}{\ln 2}$$

$$x = \frac{\ln 6}{\ln 2} - 3$$

REF: 061702aii NAT: F.LE.A.4 TOP: Exponential Equations

KEY: without common base

118 ANS: 3



$$\sqrt{56-x} = x \quad -8 \text{ is extraneous.}$$

$$56-x = x^2$$

$$0 = x^2 + x - 56$$

$$0 = (x+8)(x-7)$$

$$x = 7$$

REF: 061605aai NAT: A.REI.A.2 TOP: Solving Radicals

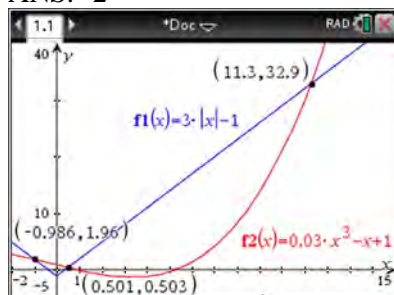
KEY: extraneous solutions

119 ANS: 2 REF: 011709aai NAT: S.IC.B.5 TOP: Analysis of Data

120 ANS: 4 REF: 061601aai NAT: N.RN.A.2 TOP: Radicals and Rational Exponents

KEY: variables

121 ANS: 2



REF: 061705aai NAT: A.REI.D.11 TOP: Other Systems

KEY: All

122 ANS: 4 REF: 081708aai NAT: A.APR.B.3 TOP: Zeros of Polynomials

KEY: All

123 ANS: 3

$$\frac{f(7) - f(-7)}{7 - (-7)} = \frac{2^{-0.25(7)} \cdot \sin\left(\frac{\pi}{2}(7)\right) - 2^{-0.25(-7)} \cdot \sin\left(\frac{\pi}{2}(-7)\right)}{14} \approx -0.26$$

REF: 061721aai NAT: F.IF.B.6 TOP: Rate of Change

KEY: All

124 ANS: 2

$$ME = \left(z \sqrt{\frac{p(1-p)}{n}} \right) = \left(1.96 \sqrt{\frac{(0.16)(0.84)}{1334}} \right) \approx 0.02$$

REF: 081716aai NAT: S.IC.B.4 TOP: Analysis of Data

125 ANS: 3 REF: 081705aai NAT: F.IF.B.4 TOP: Graphing Trigonometric Functions
KEY: increasing/decreasing126 ANS: 2 REF: 081717aai NAT: S.IC.B.3 TOP: Analysis of Data
KEY: type127 ANS: 1 REF: 061708aai NAT: F.IF.C.7 TOP: Graphing Trigonometric Functions
KEY: identify

128 ANS: 4

The vertex is $(2, -1)$ and $p = 2$. $y = -\frac{1}{4(2)}(x-2)^2 - 1$

REF: 081619aai NAT: G.GPE.A.2 TOP: Graphing Quadratic Functions

129 ANS: 4

The maximum volume of $p(x) = -(x+2)(x-10)(x-14)$ is about 56, at $x = 12.1$

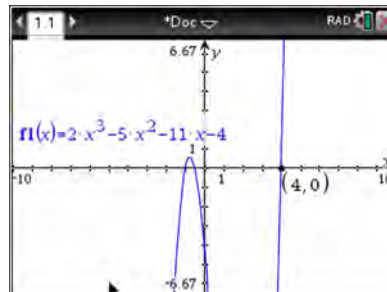
REF: 081712aai NAT: F.IF.B.4 TOP: Graphing Polynomial Functions

130 ANS: 4 REF: 061706aai NAT: F.IF.B.4 TOP: Graphing Trigonometric Functions

Algebra II Common Core State Standards 2 Point Regents Exam Questions Answer Section

131 ANS:

$f(4) = 2(4)^3 - 5(4)^2 - 11(4) - 4 = 128 - 80 - 44 - 4 = 0$ Any method that demonstrates 4 is a zero of $f(x)$ confirms



that $x - 4$ is a factor, as suggested by the Remainder Theorem.

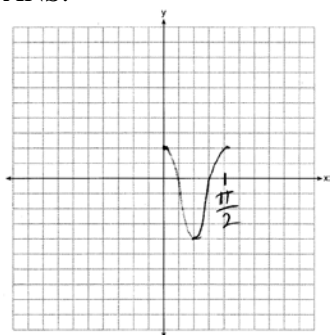
REF: spr1507aii NAT: A.APR.B.2 TOP: Remainder Theorem

132 ANS:

$\left(\ln \frac{1}{2}\right)$
1590 is negative, so $M(t)$ represents decay.

REF: 011728aii NAT: F.IF.C.8 TOP: Modeling Exponential Functions

133 ANS:



REF: 061628aii NAT: F.IF.C.7 TOP: Graphing Trigonometric Functions

KEY: graph

134 ANS:

$$A = Pe^{rt}$$

$$135000 = 100000e^{5r}$$

$$1.35 = e^{5r}$$

$$\ln 1.35 = \ln e^{5r}$$

$$\ln 1.35 = 5r$$

$$.06 \approx r \text{ or } 6\%$$

REF: 061632aii NAT: F.LE.A.4 TOP: Exponential Growth

135 ANS:

Rewrite $\frac{4}{3}$ as $\frac{1}{3} \cdot \frac{4}{1}$, using the power of a power rule.

REF: 081725aai NAT: N.RN.A.1 TOP: Radicals and Rational Exponents

136 ANS:

Using a 95% level of confidence, $x \pm 2$ standard deviations sets the usual wait time as 150-302 seconds. 360 seconds is unusual.

REF: 081629aai NAT: S.IC.B.6 TOP: Analysis of Data

137 ANS:

$$\left(x^{\frac{5}{3}}\right)^{\frac{6}{5}} = \left(y^{\frac{5}{6}}\right)^{\frac{6}{5}}$$

$$x^2 = y$$

REF: 011730aai NAT: N.RN.A.2 TOP: Radicals and Rational Exponents

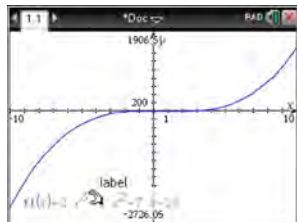
KEY: variables

138 ANS:

$j(-x) = (-x)^4 - 3(-x)^2 - 4 = x^2 - 3x^2 - 4$ Since $j(x) = j(-x)$, the function is even.

REF: 081731aai NAT: F.BF.B.3 TOP: Even and Odd Functions

139 ANS:

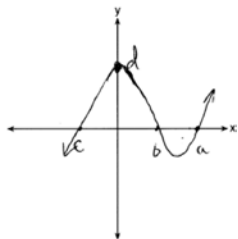


$$\begin{array}{r} 2x^2 + 6x + 23 \\ x - 5 \overline{) 2x^3 - 4x^2 - 7x - 10} \\ \underline{2x^3 - 10x^2} \\ 6x^2 - 7x \\ \underline{6x^2 - 30x} \\ 23x - 10 \\ \underline{23x - 115} \\ 105 \end{array}$$

Since there is a remainder, $x - 5$ is not a factor.

REF: 061627aai NAT: A.APR.B.2 TOP: Remainder Theorem

140 ANS:



REF: 081732aii NAT: A.APR.B.3 TOP: Zeros of Polynomials

KEY: All

141 ANS:

$$\frac{x^{\frac{8}{3}}}{x^{\frac{4}{3}}} = x^y$$

$$x^{\frac{4}{3}} = x^y$$

$$\frac{4}{3} = y$$

REF: spr1505aii NAT: N.RN.A.2 TOP: Radicals and Rational Exponents

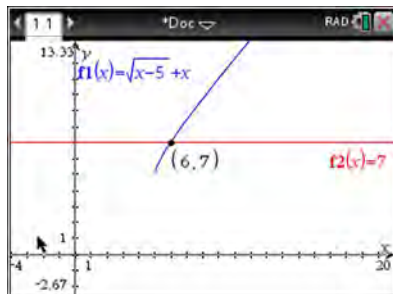
KEY: numbers

142 ANS:

$$P(S \cap M) = P(S) + P(M) - P(S \cup M) = \frac{649}{1376} + \frac{433}{1376} - \frac{974}{1376} = \frac{108}{1376}$$

REF: 061629aii NAT: S.CP.B.7 TOP: Theoretical Probability

143 ANS:



$$\sqrt{x-5} = -x+7 \quad \sqrt{x-5} = -9+7 = -2 \text{ is extraneous.}$$

$$x-5 = x^2 - 14x + 49$$

$$0 = x^2 - 15x + 54$$

$$0 = (x-6)(x-9)$$

$$x = 6, 9$$

REF: spr1508aii NAT: A.REI.A.2 TOP: Solving Radicals

KEY: extraneous solutions

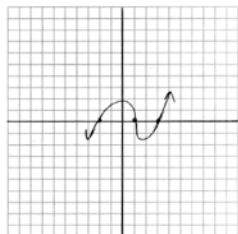
144 ANS:

$\csc \theta = \frac{1}{\sin \theta}$, and $\sin \theta$ on a unit circle represents the y value of a point on the unit circle. Since $y = \sin \theta$,

$$\csc \theta = \frac{1}{y}.$$

REF: 011727aai NAT: F.TF.A.2 TOP: Reciprocal Trigonometric Relationships

145 ANS:



REF: 011729aai NAT: A.APR.B.3 TOP: Zeros of Polynomials

146 ANS:

$$\frac{156.25 - 56.25}{70 - 50} = \frac{150}{20} = 7.5$$

Between 50-70 mph, each additional mph in speed requires 7.5 more feet to stop.

REF: 081631aai NAT: F.IF.B.6 TOP: Rate of Change

KEY: All

147 ANS:

period is $\frac{2}{3}$. The wheel rotates once every $\frac{2}{3}$ second.

REF: 061728aai NAT: F.IF.C.7 TOP: Graphing Trigonometric Functions

KEY: period

148 ANS:

sample: pails of oranges; population: truckload of oranges. It is likely that about 5% of all the oranges are unsatisfactory.

REF: 011726aai NAT: S.IC.A.2 TOP: Analysis of Data

149 ANS:

$$xi(-6i)^2 = xi(36i^2) = 36xi^3 = -36xi$$

REF: 081627aai NAT: N.CN.A.2 TOP: Operations with Complex Numbers

150 ANS:

$$\sin^2 \theta + (-0.7)^2 = 1 \quad \text{Since } \theta \text{ is in Quadrant II, } \sin \theta = \sqrt{.51} \text{ and } \tan \theta = \frac{\sin \theta}{\cos \theta} = \frac{\sqrt{.51}}{-0.7} \approx -1.02$$

$$\sin^2 \theta = .51$$

$$\sin \theta = \pm \sqrt{.51}$$

REF: 081628aai NAT: F.TF.C.8 TOP: Determining Trigonometric Functions

151 ANS:



69

REF: 061726aai NAT: S.ID.A.4 TOP: Normal Distributions
KEY: percent

152 ANS:

No, because $P(M/R) \neq P(M)$

$$\frac{70}{180} \neq \frac{230}{490}$$

$$0.38 \neq 0.47$$

REF: 011731aai NAT: S.CP.A.4 TOP: Conditional Probability

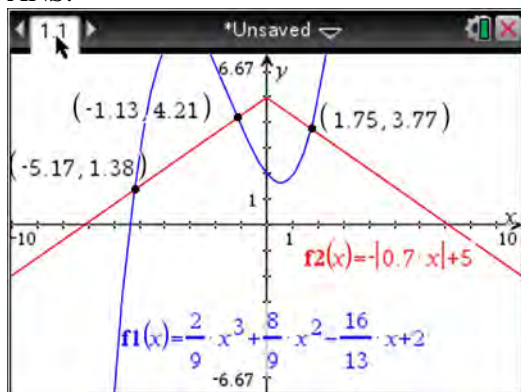
153 ANS:

Based on these data, the two events do not appear to be independent. $P(F) = \frac{106}{200} = 0.53$, while

$P(F|T) = \frac{54}{90} = 0.6$, $P(F|R) = \frac{25}{65} = 0.39$, and $P(F|C) = \frac{27}{45} = 0.6$. The probability of being female are not the same as the conditional probabilities. This suggests that the events are not independent.

REF: fall1508aai NAT: S.CP.A.4 TOP: Conditional Probability

154 ANS:



REF: fall1510aai NAT: A.REI.D.11 TOP: Other Systems
KEY: All

155 ANS:

$$P(W/D) = \frac{P(W \cap D)}{P(D)} = \frac{.4}{.5} \approx .8$$

REF: 081726aai NAT: S.CP.B.6 TOP: Conditional Probability

156 ANS:

$$\sqrt[3]{x} \cdot \sqrt{x} = x^{\frac{1}{3}} \cdot x^{\frac{1}{2}} = x^{\frac{3}{6}} \cdot x^{\frac{3}{6}} = x^{\frac{5}{6}}$$

REF: 061731aii NAT: N.RN.A.2 TOP: Operations with Radicals

KEY: with variables, index > 2

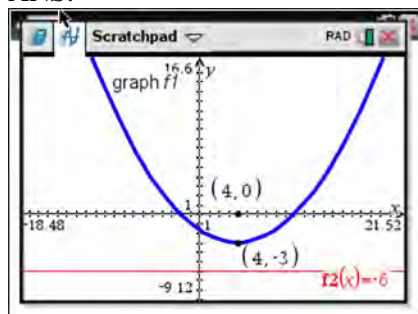
157 ANS:

$$a_1 = 4 \quad a_8 = 639$$

$$a_n = 2a_{n-1} + 1$$

REF: 081729aii NAT: F.LE.A.2 TOP: Sequences

158 ANS:



The vertex of the parabola is $(4, -3)$. The x -coordinate of the focus and the vertex is the same. Since the distance from the vertex to the directrix is 3, the distance from the vertex to the focus is 3, so the y -coordinate of the focus is 0. The coordinates of the focus are $(4, 0)$.

REF: 061630aii NAT: G.GPE.A.2 TOP: Graphing Quadratic Functions

159 ANS:

$$(4 - 3i)(5 + 2yi - 5 + 2yi)$$

$$(4 - 3i)(4yi)$$

$$16yi - 12yi^2$$

$$12y + 16yi$$

REF: spr1506aii NAT: N.CN.A.2 TOP: Operations with Complex Numbers

160 ANS:

$$\sqrt{x-4} = -x+6 \quad \sqrt{x-4} = -8+6 = -2 \text{ is extraneous.}$$

$$x-4 = x^2 - 12x + 36$$

$$0 = x^2 - 13x + 40$$

$$0 = (x-8)(x-5)$$

$$x = 5, 8$$

REF: 061730aii NAT: A.REI.A.2 TOP: Solving Radicals

KEY: extraneous solutions

161 ANS:

Since there are six flavors, each flavor can be assigned a number, 1-6. Use the simulation to see the number of times the same number is rolled 4 times in a row.

REF: 081728aai NAT: S.IC.A.2 TOP: Analysis of Data

162 ANS:

Amplitude, because the height of the graph shows the volume of the air.

REF: 081625aai NAT: F.IF.C.7 TOP: Graphing Trigonometric Functions

KEY: mixed

163 ANS:

$$(1-i)(1-i)(1-i) = (1-2i+i^2)(1-i) = -2i(1-i) = -2i+2i^2 = -2-2i$$

REF: 011725aai NAT: N.CN.A.2 TOP: Operations with Complex Numbers

164 ANS:

Applying the commutative property, $\left(3^{\frac{1}{5}}\right)^2$ can be rewritten as $\left(3^2\right)^{\frac{1}{5}}$ or $9^{\frac{1}{5}}$. A fractional exponent can be

rewritten as a radical with the denominator as the index, or $9^{\frac{1}{5}} = \sqrt[5]{9}$.

REF: 081626aai NAT: N.RN.A.1 TOP: Radicals and Rational Exponents

165 ANS:

Randomly assign participants to two groups. One group uses the toothpaste with ingredient X and the other group uses the toothpaste without ingredient X .

REF: 061626aai NAT: S.IC.B.3 TOP: Analysis of Data

KEY: type

166 ANS:

$r(2) = -6$. Since there is a remainder when the cubic is divided by $x-2$, this binomial is not a factor.

$$\begin{array}{r|rrrr} 2 & 1 & -4 & 4 & 6 \\ & & 2 & -4 & 0 \\ \hline & 1 & -2 & 0 & -6 \end{array}$$

REF: 061725aai NAT: A.APR.B.2 TOP: Remainder Theorem

167 ANS:

$$x^2(4x-1) + 4(4x-1) = (x^2+4)(4x-1)$$

REF: 061727aai NAT: A.SSE.A.2 TOP: Factoring Polynomials

KEY: factoring by grouping

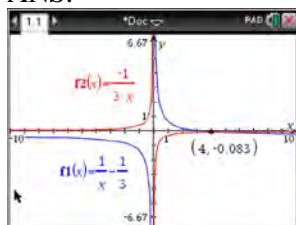
168 ANS:

$$\frac{x^3 + 9}{x^3 + 8} = \frac{x^3 + 8}{x^3 + 8} + \frac{1}{x^3 + 8}$$

$$\frac{x^3 + 9}{x^3 + 8} = \frac{x^3 + 9}{x^3 + 8}$$

REF: 061631aii NAT: A.APR.C.4 TOP: Polynomial Identities

169 ANS:



$$\frac{1}{x} - \frac{1}{3} = -\frac{1}{3x}$$

$$\frac{3-x}{3x} = -\frac{1}{3x}$$

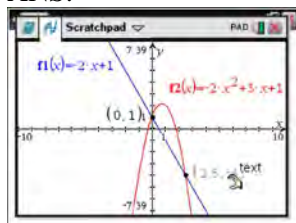
$$3-x = -1$$

$$x = 4$$

REF: 061625aii NAT: A.REI.A.2 TOP: Solving Rationals

KEY: rational solutions

170 ANS:



$$-2x + 1 = -2x^2 + 3x + 1$$

$$2x^2 - 5x = 0$$

$$x(2x - 5) = 0$$

$$x = 0, \frac{5}{2}$$

REF: fall1507aii NAT: A.REI.C.7 TOP: Quadratic-Linear Systems

KEY: All

171 ANS:

$$(x^2 + y^2)^2 = (x^2 - y^2)^2 + (2xy)^2$$

$$x^4 + 2x^2y^2 + y^4 = x^4 - 2x^2y^2 + y^4 + 4x^2y^2$$

$$x^4 + 2x^2y^2 + y^4 = x^4 + 2x^2y^2 + y^4$$

REF: 081727aii NAT: A.APR.C.4 TOP: Polynomial Identities

172 ANS:

A student is more likely to jog if both siblings jog. 1 jogs: $\frac{416}{2239} \approx 0.19$. both jog: $\frac{400}{1780} \approx 0.22$

REF: 061732aai NAT: S.CP.A.4 TOP: Conditional Probability

173 ANS:

$0 = \log_{10}(x-4)$ The x -intercept of h is $(2,0)$. f has the larger value.

$$10^0 = x - 4$$

$$1 = x - 4$$

$$x = 5$$

REF: 081630aai NAT: F.IF.C.9 TOP: Comparing Functions

KEY: All

174 ANS:

Let x equal the first integer and $x + 1$ equal the next. $(x + 1)^2 - x^2 = x^2 + 2x + 1 - x^2 = 2x + 1$. $2x + 1$ is an odd integer.

REF: fall1511aai NAT: A.APR.C.4 TOP: Polynomial Identities

175 ANS:

The expression is of the form $y^2 - 5y - 6$ or $(y - 6)(y + 1)$. Let $y = 4x^2 + 5x$:

$$(4x^2 + 5x - 6)(4x^2 + 5x + 1)$$

$$(4x - 3)(x + 2)(4x + 1)(x + 1)$$

REF: fall1512aai NAT: A.SSE.A.2 TOP: Factoring Polynomials

KEY: $a > 1$

176 ANS:

$$x = (y - 3)^3 + 1$$

$$x - 1 = (y - 3)^3$$

$$\sqrt[3]{x - 1} = y - 3$$

$$\sqrt[3]{x - 1} + 3 = y$$

$$f^{-1}(x) = \sqrt[3]{x - 1} + 3$$

REF: fall1509aai NAT: F.BF.B.4 TOP: Inverse of Functions

KEY: equations

177 ANS:

$P(A \cup B) = P(A) + P(B) - P(A \cap B)$ A and B are independent since $P(A \cap B) = P(A) \cdot P(B)$

$$0.8 = 0.6 + 0.5 - P(A \cap B)$$

$$0.3 = 0.6 \cdot 0.5$$

$$P(A \cap B) = 0.3$$

$$0.3 = 0.3$$

REF: 081632aai NAT: S.CP.A.2 TOP: Theoretical Probability

178 ANS:

$$8.75 = 1.25x^{49} \quad 4$$

$$7 = x^{49}$$

$$x = \sqrt[49]{7} \approx 1.04$$

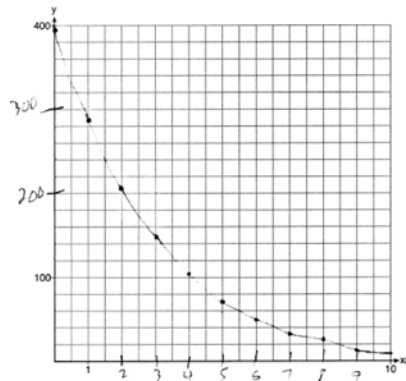
REF: 081730aii NAT: F.LE.A.4 TOP: Exponential Growth

179 ANS:

$$\begin{array}{r} 3x + 13 \\ x - 2 \overline{) 3x^2 + 7x - 20} \quad 3x + 13 + \frac{6}{x - 2} \\ \underline{3x^2 - 6x} \\ 13x - 20 \\ \underline{13x - 26} \\ 6 \end{array}$$

REF: 011732aii NAT: A.APR.D.6 TOP: Rational Expressions

180 ANS:



REF: 061729aii NAT: F.IF.C.7 TOP: Graphing Exponential Functions

KEY: All

Algebra II Common Core State Standards 4 Point Regents Exam Questions Answer Section

181 ANS:

$$7 = 20(0.5)^{\frac{t}{8.02}}$$

$$\log 0.35 = \log 0.5^{\frac{t}{8.02}}$$

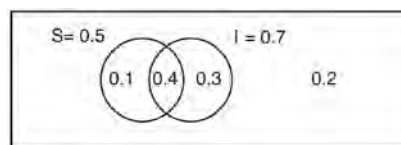
$$\log 0.35 = \frac{t \log 0.5}{8.02}$$

$$\frac{8.02 \log 0.35}{\log 0.5} = t$$

$$t \approx 12$$

REF: 081634aii NAT: F.LE.A.4 TOP: Exponential Decay

182 ANS:



This scenario can be modeled with a Venn Diagram:

Since $P(S \cup I) = 0.2$, $P(S \cup I) = 0.8$. Then, $P(S \cap I) = P(S) + P(I) - P(S \cup I)$ If S and I are independent, then the

$$= 0.5 + 0.7 - 0.8$$

$$= 0.4$$

Product Rule must be satisfied. However, $(0.5)(0.7) \neq 0.4$. Therefore, salary and insurance have not been treated independently.

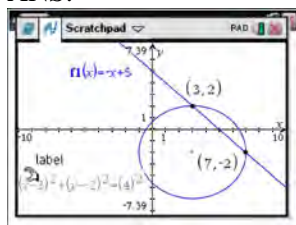
REF: spr1513aii NAT: S.CP.A.2 TOP: Theoretical Probability

183 ANS:

$$P(P/K) = \frac{P(P \wedge K)}{P(K)} = \frac{1.9}{2.3} \approx 82.6\% \quad \text{A key club member has an 82.6\% probability of being enrolled in AP Physics.}$$

REF: 011735aii NAT: S.CP.B.6 TOP: Conditional Probability

184 ANS:



$$y = -x + 5 \quad y = -7 + 5 = -2$$

$$(x - 3)^2 + (-x + 5 + 2)^2 = 16 \quad y = -3 + 5 = 2$$

$$x^2 - 6x + 9 + x^2 - 14x + 49 = 16$$

$$2x^2 - 20x + 42 = 0$$

$$x^2 - 10x + 21 = 0$$

$$(x - 7)(x - 3) = 0$$

$$x = 7, 3$$

REF: 061633aai NAT: A.REI.C.7 TOP: Quadratic-Linear Systems

KEY: AII

185 ANS:

$0.602 \pm 2 \cdot 0.066 = 0.47 - 0.73$. Since 0.50 falls within the 95% interval, this supports the concern there may be an even split.

REF: 061635aai NAT: S.IC.B.5 TOP: Analysis of Data

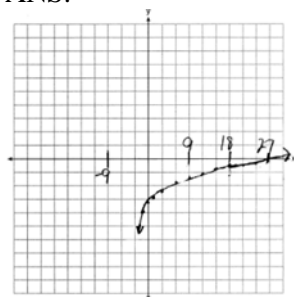
186 ANS:

$$a_n = x^{n-1}(x+1) \quad x^{n-1} = 0 \quad x+1 = 0$$

$$x = 0 \quad x = -1$$

REF: spr1511aai NAT: F.BF.A.2 TOP: Sequences

187 ANS:



As $x \rightarrow -3, y \rightarrow -\infty$. As $x \rightarrow \infty, y \rightarrow \infty$.

REF: 061735aai NAT: F.IF.C.7 TOP: Graphing Logarithmic Functions

188 ANS:

$$\frac{6.25 - 2.25}{21 - 5} = \frac{4}{16} = \$0.25 \text{ fine per day. } 2.25 - 5(.25) = \$1 \text{ replacement fee. } a_n = 1.25 + (n - 1)(.25). \quad a_{60} = \$16$$

REF: 081734aai NAT: F.LE.A.2 TOP: Sequences

189 ANS:

$$\frac{3p}{p-5} = \frac{p+2}{p+3}$$

$$3p^2 + 9p = p^2 - 3p - 10$$

$$2p^2 + 12p + 10 = 0$$

$$p^2 + 6p + 5 = 0$$

$$(p+5)(p+1) = 0$$

$$p = -5, -1$$

REF: 081733aii NAT: A.REI.A.2 TOP: Solving Rationals

KEY: rational solutions

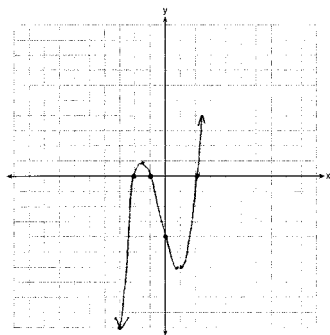
190 ANS:

$$2x^3 - 10x^2 + 11x - 7 = 2x^3 + hx^2 + 3x - 8x^2 - 4hx - 12 + k \quad h = -2$$

$$-2x^2 + 8x + 5 = hx^2 - 4hx + k \quad k = 5$$

REF: 011733aii NAT: A.APR.C.4 TOP: Polynomial Identities

191 ANS:



$$0 = x^2(x+1) - 4(x+1)$$

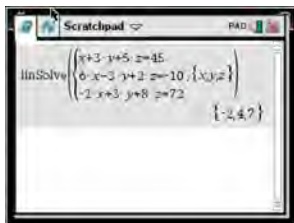
$$0 = (x^2 - 4)(x+1)$$

$$0 = (x+2)(x-2)(x+1)$$

$$x = -2, -1, 2$$

REF: 081633aii NAT: F.IF.C.7 TOP: Graphing Polynomial Functions

192 ANS:



$$\begin{array}{rclcl}
 6x - 3y + 2z = -10 & x + 3y + 5z = 45 & 4x + 10z = 62 & 4x + 4(7) = 20 & \\
 -2x + 3y + 8z = 72 & 6x - 3y + 2z = -10 & 4x + 4z = 20 & 4x = -8 & \\
 4x + 10z = 62 & 7x + 7z = 35 & 6z = 42 & x = -2 & \\
 & 4x + 4z = 20 & z = 7 & &
 \end{array}$$

$$\begin{aligned}
 6(-2) - 3y + 2(7) &= -10 \\
 -3y &= -12 \\
 y &= 4
 \end{aligned}$$

REF: spr1510aai NAT: A.REI.C.6 TOP: Solving Linear Systems
KEY: three variables

193 ANS:

Jillian's plan, because distance increases by one mile each week. $a_1 = 10$ $a_n = n + 12$
 $a_n = a_{n-1} + 1$

REF: 011734aai NAT: F.LE.A.2 TOP: Sequences

194 ANS:

$$S_n = \frac{33000 - 33000(1.04)^n}{1 - 1.04} \quad S_{15} = \frac{33000 - 33000(1.04)^{15}}{1 - 1.04} \approx 660778.39$$

REF: 061634aai NAT: A.SSE.B.4 TOP: Series

195 ANS:

$$\begin{array}{rclcl}
 x + y + z = 1 & 2x + 2y + 2z = 2 & -2z - z = 3 & y - (-1) = 3 & x + 2 - 1 = 1 \\
 -x + 3y - 5z = 11 & 2x + 4y + 6z = 2 & -3z = 3 & y = 2 & x = 0 \\
 4y - 4z = 12 & 2y + 4z = 0 & z = -1 & & \\
 y - z = 3 & y + 2z = 0 & & & \\
 & y = -2z & & &
 \end{array}$$

REF: 061733aai NAT: A.REI.C.6 TOP: Solving Linear Systems
KEY: three variables

196 ANS:

$$\frac{f(4) - f(-2)}{4 - (-2)} = \frac{80 - 1.25}{6} = 13.125 \quad g(x) \text{ has a greater rate of change}$$

$$\frac{g(4) - g(-2)}{4 - (-2)} = \frac{179 - (-49)}{6} = 38$$

REF: 061636aai NAT: F.IF.B.6 TOP: Rate of Change

KEY: AII

197 ANS:

$$M = 172600 \cdot \frac{0.00305(1 + 0.00305)^{12 \cdot 15}}{(1 + 0.00305)^{12 \cdot 15} - 1} \approx 1247 \quad 1100 = (172600 - x) \cdot \frac{0.00305(1 + 0.00305)^{12 \cdot 15}}{(1 + 0.00305)^{12 \cdot 15} - 1}$$

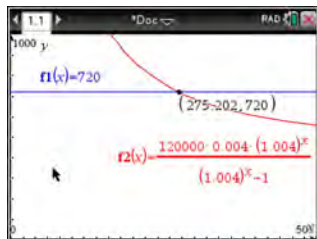
$$1100 \approx (172600 - x) \cdot (0.007228)$$

$$152193 \approx 172600 - x$$

$$20407 \approx x$$

REF: 061734aai NAT: A.SSE.B.4 TOP: Series

198 ANS:



$$720 = \frac{120000 \left(\frac{.048}{12} \right) \left(1 + \frac{.048}{12} \right)^n}{\left(1 + \frac{.048}{12} \right)^n - 1} \frac{275.2}{12} \approx 23 \text{ years}$$

$$720(1.004)^n - 720 = 480(1.004)^n$$

$$240(1.004)^n = 720$$

$$1.004^n = 3$$

$$n \log 1.004 = \log 3$$

$$n \approx 275.2 \text{ months}$$

REF: spr1509aai NAT: A.CED.A.1 TOP: Exponential Growth

199 ANS:

$0.506 \pm 2 \cdot 0.078 = 0.35 - 0.66$. The 32.5% value falls below the 95% confidence level.

REF: 061736aai NAT: S.IC.B.5 TOP: Analysis of Data

200 ANS:

$$\text{normcdf}(510, 540, 480, 24) = 0.0994 \quad z = \frac{510 - 480}{24} = 1.25 \quad 1.25 = \frac{x - 510}{20} \quad 2.5 = \frac{x - 510}{20} \quad 535 - 560$$

$$z = \frac{540 - 480}{24} = 2.5 \quad x = 535 \quad x = 560$$

REF: fall1516aii NAT: S.ID.A.4 TOP: Normal Distributions

KEY: probability

201 ANS:

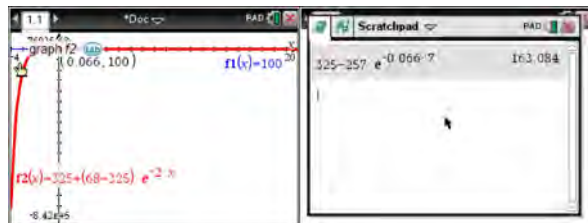
$$20000 = PMT \left(\frac{1 - (1 + 0.00625)^{-60}}{0.00625} \right) \quad 21000 - x = 300 \left(\frac{1 - (1 + 0.00625)^{-60}}{0.00625} \right)$$

$$PMT \approx 400.76$$

$$x \approx 6028$$

REF: 011736aii NAT: A.SSE.B.4 TOP: Series

202 ANS:



$$100 = 325 + (68 - 325)e^{-2k} \quad T = 325 - 257e^{-0.066T}$$

$$-225 = -257e^{-2k}$$

$$T = 325 - 257e^{-0.066(7)} \approx 163$$

$$k = \frac{\ln\left(\frac{-225}{-257}\right)}{-2}$$

$$k \approx 0.066$$

REF: fall1513aii NAT: F.LE.A.4 TOP: Exponential Growth

203 ANS:

$$\left(\sqrt{2x-7}\right)^2 = (5-x)^2 \quad \sqrt{2(4)-7} + 4 = 5 \quad \sqrt{2(8)-7} + 8 = 5$$

$$2x - 7 = 25 - 10x + x^2 \quad \sqrt{1} = 1 \quad \sqrt{9} \neq -3$$

$$0 = x^2 - 12x + 32$$

$$0 = (x-8)(x-4)$$

$$x = 4, 8$$

REF: 081635aii NAT: A.REI.A.2 TOP: Solving Radicals

KEY: extraneous solutions

204 ANS:

$$0 = 6(-5)^3 + b(-5)^2 - 52(-5) + 15 \quad z(x) = 6x^3 + 19x^2 - 52x + 15$$

$$0 = -750 + 25b + 260 + 15$$

$$475 = 25b$$

$$19 = b$$

$$\begin{array}{r|rrrr} -5 & 6 & 19 & -52 & 15 \\ & & -30 & 55 & 15 \\ \hline & 6 & -11 & 3 & 0 \end{array}$$

$$6x^2 - 11x + 3 = 0$$

$$(2x - 3)(3x - 1) = 0$$

$$x = \frac{3}{2}, \frac{1}{3}, -5$$

REF: fall1515aai NAT: A.APR.B.2 TOP: Remainder Theorem

205 ANS:

Yes. The margin of error from this simulation indicates that 95% of the observations fall within ± 0.12 of the simulated proportion, 0.25. The margin of error can be estimated by multiplying the standard deviation, shown to

be 0.06 in the dotplot, by 2, or applying the estimated standard error formula, $\left(\sqrt{\frac{p(1-p)}{n}} \right)$ or $\left(\sqrt{\frac{(0.25)(0.75)}{50}} \right)$

and multiplying by 2. The interval 0.25 ± 0.12 includes plausible values for the true proportion of people who prefer Stephen's new product. The company has evidence that the population proportion could be at least 25%. As seen in the dotplot, it can be expected to obtain a sample proportion of 0.18 (9 out of 50) or less several times, even when the population proportion is 0.25, due to sampling variability. Given this information, the results of the survey do not provide enough evidence to suggest that the true proportion is not at least 0.25, so the development of the product should continue at this time.

REF: spr1512aai NAT: S.IC.B.4 TOP: Analysis of Data

206 ANS:

Some of the students who did not drink energy drinks read faster than those who did drink energy drinks.

$17.7 - 19.1 = -1.4$ Differences of -1.4 and less occur $\frac{25}{232}$ or about 10% of the time, so the difference is not unusual.

REF: 081636aai NAT: S.IC.B.5 TOP: Analysis of Data

207 ANS:

$$y = 4.168(3.981)^x \quad 100 = 4.168(3.981)^x$$

$$\log \frac{100}{4.168} = \log(3.981)^x$$

$$\log \frac{100}{4.168} = x \log(3.981)$$

$$\frac{\log \frac{100}{4.168}}{\log(3.981)} = x$$

$$x \approx 2.25$$

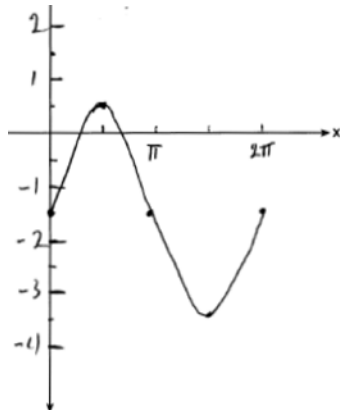
REF: 081736aia NAT: S.ID.B.6 TOP: Regression KEY: exponential AII

208 ANS:

The mean difference between the students' final grades in group 1 and group 2 is -3.64 . This value indicates that students who met with a tutor had a mean final grade of 3.64 points less than students who used an on-line subscription. One can infer whether this difference is due to the differences in intervention or due to which students were assigned to each group by using a simulation to rerandomize the students' final grades many (500) times. If the observed difference -3.64 is the result of the assignment of students to groups alone, then a difference of -3.64 or less should be observed fairly regularly in the simulation output. However, a difference of -3 or less occurs in only about 2% of the rerandomizations. Therefore, it is quite unlikely that the assignment to groups alone accounts for the difference; rather, it is likely that the difference between the interventions themselves accounts for the difference between the two groups' mean final grades.

REF: fall1514aia NAT: S.IC.B.5 TOP: Analysis of Data

209 ANS:

Part a sketch is shifted $\frac{\pi}{3}$ units right.REF: 081735aia NAT: F.IF.C.7 TOP: Graphing Trigonometric Functions
KEY: graph

Algebra II Common Core State Standards 6 Point Regents Exam Questions Answer Section

210 ANS:

$$0 = \sqrt{t} - 2t + 6 \quad 2\left(\frac{9}{4}\right) - 6 < 0, \text{ so } \frac{9}{4} \text{ is extraneous.}$$

$$2t - 6 = \sqrt{t}$$

$$4t^2 - 24t + 36 = t$$

$$4t^2 - 25t + 36 = 0$$

$$(4t - 9)(t - 4) = 0$$

$$t = \frac{9}{4}, 4$$

$$(\sqrt{1} - 2(1) + 6) - (\sqrt{3} - 2(3) + 6) = 5 - \sqrt{3} \approx 3.268 \quad 327 \text{ mph}$$

REF: 011737aii NAT: A.REI.A.2 TOP: Solving Radicals

KEY: context

211 ANS:

$A(t) = 100(0.5)^{\frac{t}{63}}$, where t is time in years, and $A(t)$ is the amount of titanium-44 left after t years.

$$\frac{A(10) - A(0)}{10 - 0} = \frac{89.58132 - 100}{10} = -1.041868 \quad \text{The estimated mass at } t = 40 \text{ is } 100 - 40(-1.041868) \approx 58.3. \quad \text{The}$$

actual mass is $A(40) = 100(0.5)^{\frac{40}{63}} \approx 64.3976$. The estimated mass is less than the actual mass.

REF: fall1517aii NAT: F.LE.A.2 TOP: Modeling Exponential Functions

KEY: AII

212 ANS:

$$A = 5000(1.045)^n \quad 5000\left(1 + \frac{.046}{4}\right)^{4(6)} - 5000(1.045)^6 \approx 6578.87 - 6511.30 \approx 67.57 \quad 10000 = 5000\left(1 + \frac{.046}{4}\right)^{4n}$$

$$B = 5000\left(1 + \frac{.046}{4}\right)^{4n}$$

$$2 = 1.0115^{4n}$$

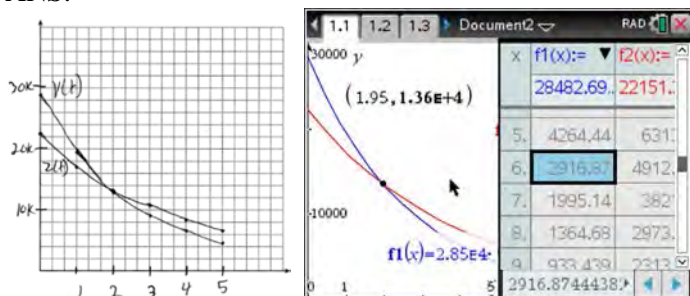
$$\log 2 = 4n \cdot \log 1.0115$$

$$n = \frac{\log 2}{4 \log 1.0115}$$

$$n \approx 15.2$$

REF: 081637aii NAT: A.CED.A.1 TOP: Exponential Growth

213 ANS:

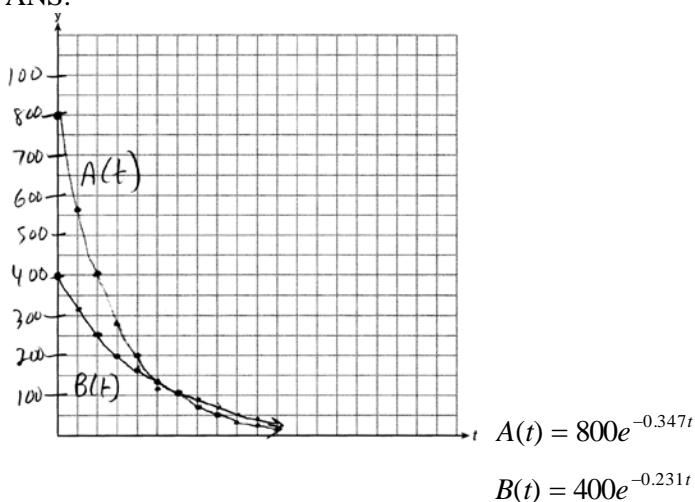


At 1.95 years, the value of the car equals the loan

balance. Zach can cancel the policy after 6 years.

REF: 081737aii NAT: A.REI.D.11 TOP: Other Systems
KEY: AII

214 ANS:



$$A(t) = 800e^{-0.347t} \quad 800e^{-0.347t} = 400e^{-0.231t} \quad 0.15 = e^{-0.347t}$$

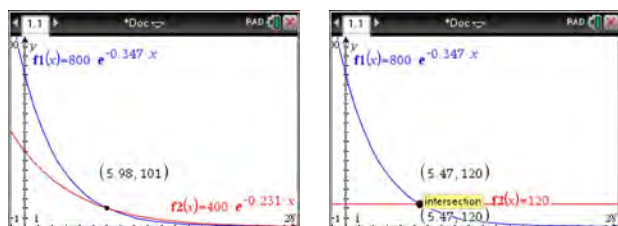
$$B(t) = 400e^{-0.231t} \quad \ln 2e^{-0.347t} = \ln e^{-0.231t} \quad \ln 0.15 = \ln e^{-0.347t}$$

$$\ln 2 + \ln e^{-0.347t} = \ln e^{-0.231t} \quad \ln 0.15 = -0.347t \cdot \ln e$$

$$\ln 2 - 0.347t = -0.231t \quad 5.5 \approx t$$

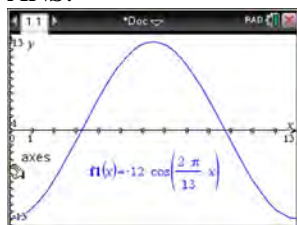
$$\ln 2 = 0.116t$$

$$6 \approx t$$

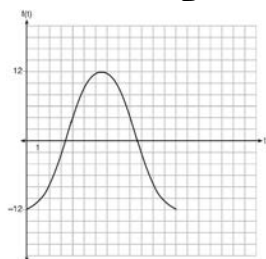


REF: 061637aii NAT: A.REI.D.11 TOP: Other Systems
KEY: AII

215 ANS:



The amplitude, 12, can be interpreted from the situation, since the water level has a minimum of -12 and a maximum of 12 . The value of A is -12 since at $8:30$ it is low tide. The period of the function is 13 hours, and is expressed in the function through the parameter B . By experimentation with technology or using the relation $P = \frac{2\pi}{B}$ (where P is the period), it is determined that $B = \frac{2\pi}{13}$.



$$f(t) = -12 \cos\left(\frac{2\pi}{13} t\right)$$

In order to answer the question about when to fish, the student must interpret the function and determine which choice, $7:30$ pm or $10:30$ pm, is on an increasing interval. Since the function is increasing from $t = 13$ to $t = 19.5$ (which corresponds to $9:30$ pm to $4:00$ am), $10:30$ is the appropriate choice.

REF: spr1514aai NAT: F.IF.C.7 TOP: Graphing Trigonometric Functions
KEY: graph

216 ANS:

$$100 = 140 \left(\frac{1}{2}\right)^{\frac{5}{h}} \quad \log \frac{100}{140} = \log \left(\frac{1}{2}\right)^{\frac{5}{h}} \quad 40 = 140 \left(\frac{1}{2}\right)^{\frac{t}{10.3002}}$$

$$\log \frac{5}{7} = \frac{5}{h} \log \frac{1}{2} \quad \log \frac{2}{7} = \log \left(\frac{1}{2}\right)^{\frac{t}{10.3002}}$$

$$h = \frac{5 \log \frac{1}{2}}{\log \frac{5}{7}} \approx 10.3002 \quad \log \frac{2}{7} = \frac{t \log \left(\frac{1}{2}\right)}{10.3002}$$

$$t = \frac{10.3002 \log \frac{2}{7}}{\log \frac{1}{2}} \approx 18.6$$

REF: 061737aai NAT: F.LE.A.4 TOP: Exponential Decay