

Algebra I Common Core State Standards Regents Bimodal Graph Worksheets

1 Given: $y + x > 2$

$$y \leq 3x - 2$$

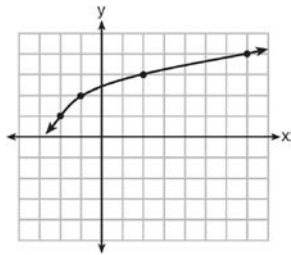
Which graph shows the solution of the given set of inequalities?

2 Which graph shows a line where each value of y is three more than half of x ?

3 Morgan can start wrestling at age 5 in Division 1. He remains in that division until his next odd birthday when he is required to move up to the next division level. Which graph correctly represents this information?

4 Which graph represents $y = \sqrt{x - 2}$?

5 The graph of $y = f(x)$ is shown below.



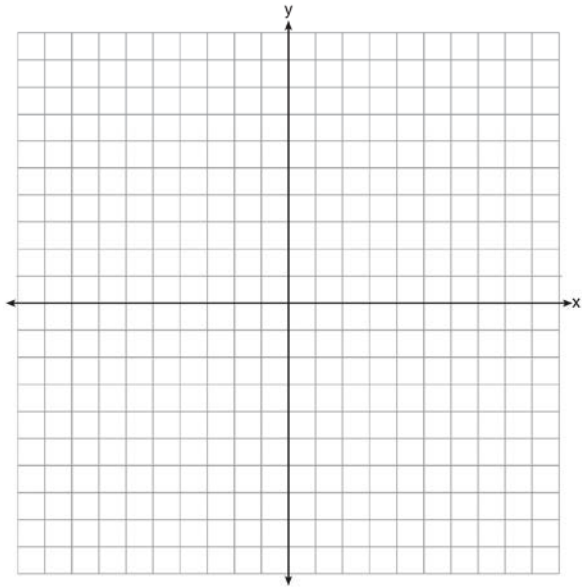
What is the graph of $y = f(x + 1) - 2$?

6 A population that initially has 20 birds approximately doubles every 10 years. Which graph represents this population growth?

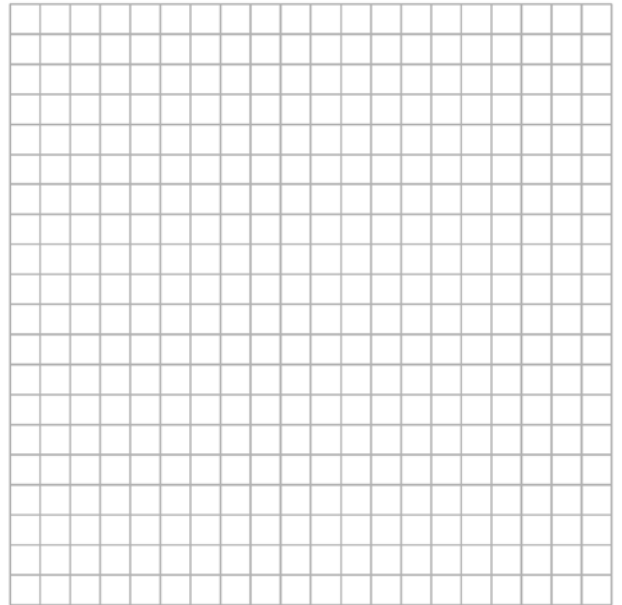
7 Which graph represents $f(x) = \begin{cases} |x| & x < 1 \\ \sqrt{x} & x \geq 1 \end{cases}$?

Algebra I Common Core State Standards Regents Bimodal Graph Worksheets

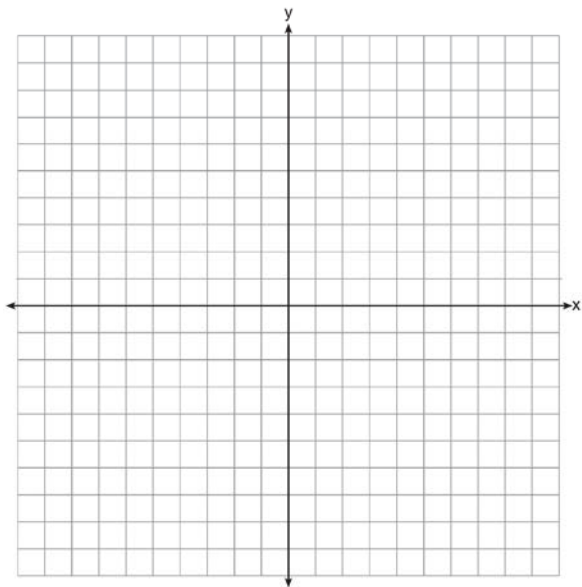
1



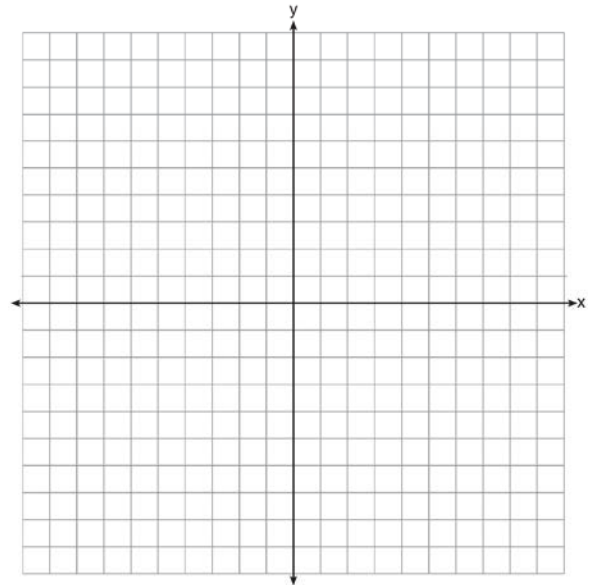
3



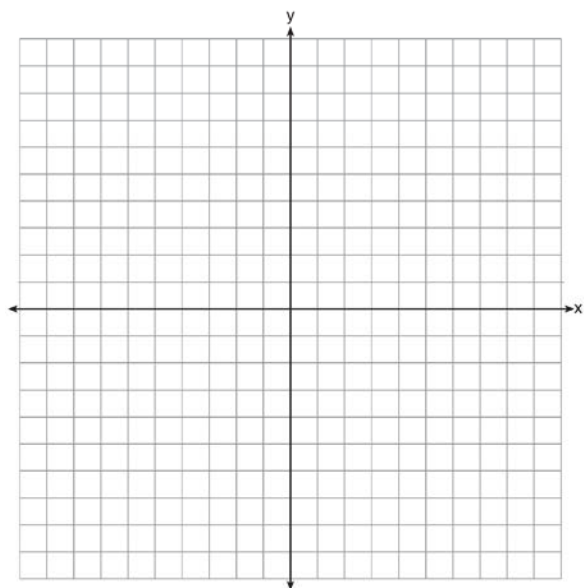
2



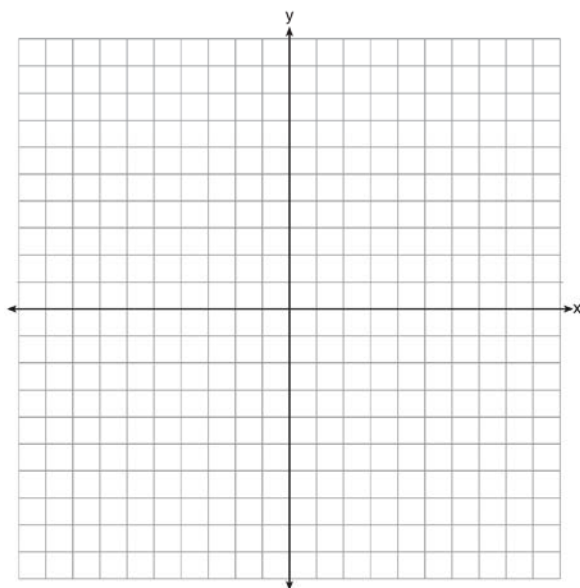
4



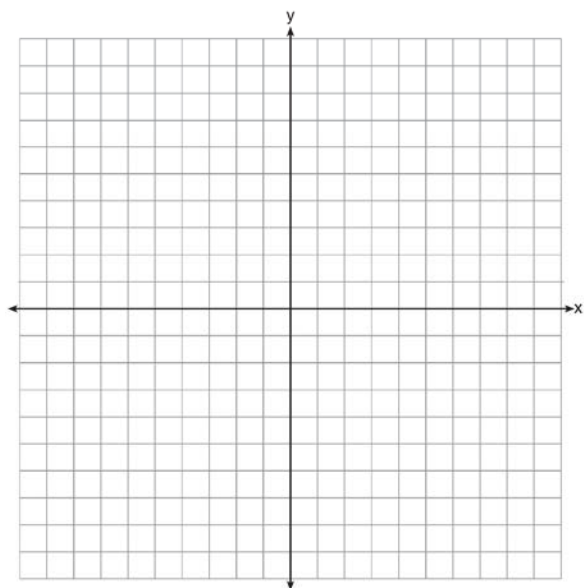
5



7

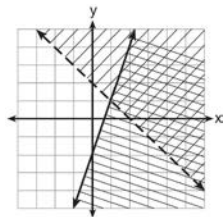


6



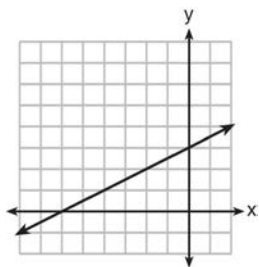
Algebra I Common Core State Standards Regents Bimodal Graph Worksheets Answer Section

1 ANS:



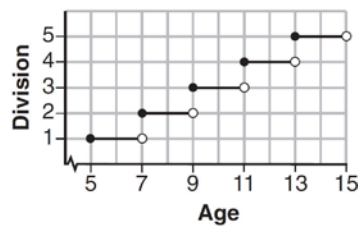
REF: 061404ai TOP: Graphing Systems of Linear Inequalities

2 ANS:



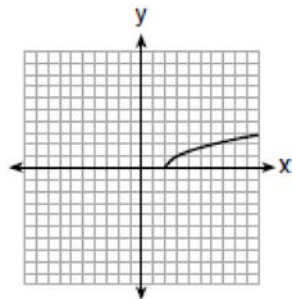
REF: 081413ai TOP: Graphing Linear Functions

3 ANS:



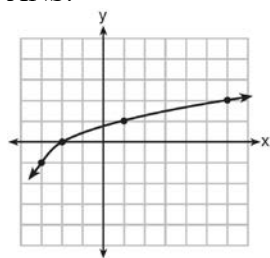
REF: 061507ai TOP: Graphing Step Functions

4 ANS:



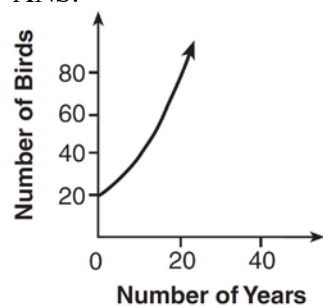
REF: 061703ai TOP: Graphing Root Functions

5 ANS:



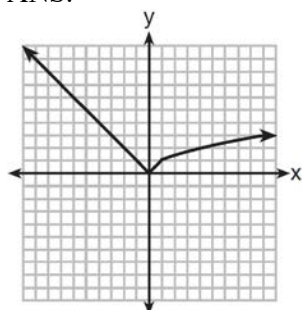
REF: 011620ai TOP: Transformations with Functions

6 ANS:



REF: 081410ai TOP: Families of Functions

7 ANS:



REF: 081516ai TOP: Graphing Piecewise-Defined Functions